

Gold Coast Gazette

Volume XXIV No. 39 Hometown Newspaper for Glen Cove, Sea Cliff, Glen Head, Glenwood, Locust Valley and Brookville Week of 6/4/15 75¢

2015 Sea Cliff Memorial Day Parade



Glen Cove Photo Spread Inside

Port Washington's 25th Annual Harborfest

What: Harborfest Dock Day And Craft Festival
Presented By The Town Of North Hempstead And The Port Washington Chamber Of Commerce

When: Sunday June 7, 2015 10Am - 5Pm

Where: Town Dock And Lower Main Street, Port Washington, L.I., N.Y.
Free Trolley And Shuttle Buses From The Lirr Station And Manorhaven Park.

Why: A Celebration Of Our Nautical Heritage On The Waterfront Of Beautiful Manhasset Bay, In Order To Enhance Public Awareness Of The Need To Protect And Preserve This Precious Asset.

Admission: Free (Fee For Cruises)

Events:

- Craft Show, 100+Vendors
- Cruises Aboard The Schooner Soundwaters
- Rides Aboard The Port Washington Water Taxi
- Tours Of Manhasset Bay
- Fire Boat Demonstrations
- Nautical Singers And Entertainment At The Tugboat
- Children's Fun Park
- Family Fun Stage & Talent Show
- Enviro-Expo
- Art In The Park
- Model Boat Regatta At Baxter's Pond
- Opening Of The Treasure Chest
- New Nautical Exhibit In "Tugboat" Museum
- Merchant & Organization Booths, Exhibits
- Fabulous Food Court
- Free Rides On The Bid Trolley
- Free Reusable Tote Bags For First 2,000 Visitors
- Much More!

For Additional Information Call (516) 883-6566
Or Email: Office@Pwcc.Org Media Contact Is Bobbie Polay
Craft Vendor Website: Www.Pwcraffair.Com

Happenings at the Glen Cove Senior Center

Membership at the Glen Cove Senior Center is free and open to all seniors 60 years and older who are Nassau County residents. Stop by the Site Manager's office to register [130 Glen Street] - you need to be registered to participate in any of our activities. Need a ride? Free bus service from/to our "catchment area" is available upon request. Visit our website @ www.glencoveseniorcenter.com or call 516-759-9610 for more info.

Let's get physical....at the Glen Cove Senior Center! We have 12 exercise classes each week!

Mondays:	10:30 AM	Exercise with the YMCA
	1:00 PM	Tai Chi
	3:30 PM	Moving for Better Balance
Tuesdays:	9:30 AM	Walking Club
Wednesdays:	9:00 AM	Seniorobics
	10:30 AM	Exercise with the YMCA
	12:45 PM	Chair Yoga
	3:30 PM	Moving for Better Balance
Thursdays:	10:15 AM	Arthritis Exercise & Education Class (bus to NSLIJ-Glen Cove)
	3:30 PM	Dancercise
Fridays:	9:00 AM	Seniorobics
	10:30 AM	Exercise with the YMCA
	1:30 PM	Line Dancing
	3:00 PM	Tai Chi

New at the Glen Cove Senior Center - "Moving for Better Balance" - a Tai Chi Based Fall Prevention Program. If you are concerned about falling and are 65 years of age or older, you are eligible to attend this free 12-week, 2x week program, beginning June 15, 2015. Registration required - contact Jenny Weiss @516-759-9610, jweiss@cityofglencoveny.org

*North Shore Historical Museum presents
Audrey Hepburn Humphrey Bogart William Holden*

Sabrina

Directed by Billy Wilder A Paramount Picture (1954)
Sponsored by Pistilli Metro Center, Glen Cove
FRIDAY, JUNE 5, 2015 7:00 pm RSVP (516) 801 1191
Admission: \$15 Members: \$10 light refreshments
NSHM, 140 Glen St., Glen Cove, NY www.northshorehistoricalmuseum.org

High School Sophomores Mentor Connolly Students

Glen Cove High School students in Lauren Jensen's 10th-grade English class traveled to Connolly School on May 20 to mentor young writers in Lucretia Simone's third-grade class.

Photo Caption: Glen Cove High School sophomores provided writing help to Connolly School third-graders during a recent visit to their school.

Photo courtesy of Glen Cove City School District

The sophomores provided one-on-one tutoring for the third-grade students that focused on all levels of the writing process, from composing a first draft to editing and revising. The writing mentorship is part of a social studies unit designed by the third-grade teachers at Connolly. The third-graders are currently composing persuasive essays on countries of their choice, a culminating assignment that teachers developed to emphasize writing across the curriculum.



JM Cleaning Services Corp.
Joseph Misiakiewicz

Oriental and Area Rugs
cleaned at our on site
cleaning plant

Wall to Wall Carpet
Cleaned in Home

44 Sea Cliff Avenue
Glen Cove, NY 11542
(516) 676-5500

Got Poop?
Scoopydoo
1-800-Dog
Poop

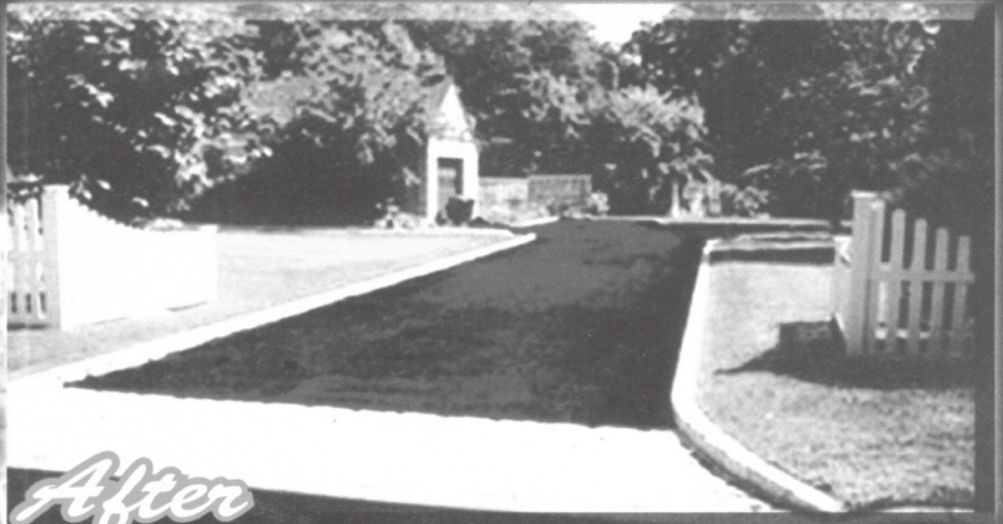


The Gold Coast Gazette
57 Glen Street,
Glen Cove, NY 11542
(USPS008886)(ISSN10651748)

Postmaster: Send address changes to The Gold Coast Gazette, 57 Glen St. Glen Cove, NY 11542. Entered as second class paid postage at the Post Office at Sea Cliff N.Y.

Published weekly on Thursday by KCH Publications Inc. 57 Glen St., Glen Cove NY 11542. Phone (516) 671-2360. Price per copy is 75 cents.

PAVING



MASONRY

Call 1-800-SEALCOAT

SEALCOATING



FREE ESTIMATES

Call 1-800-BLACKTOP

631-242-5100 Lic. # 16-292-HI

ATLAS ASPHALT & SONS Serving All Long Island

www.atlasasphalt.com



Visit Us at



Up To \$25.00 Off
or 10% Off Estimate Up to \$25
ANY SEALCOAT

*Must Present Coupon At Time of Estimate



\$100.00 Off
ANY PAVING PROJECT*

*ANY JOB OVER \$1500.00
*Must Present Coupon At Time of Estimate

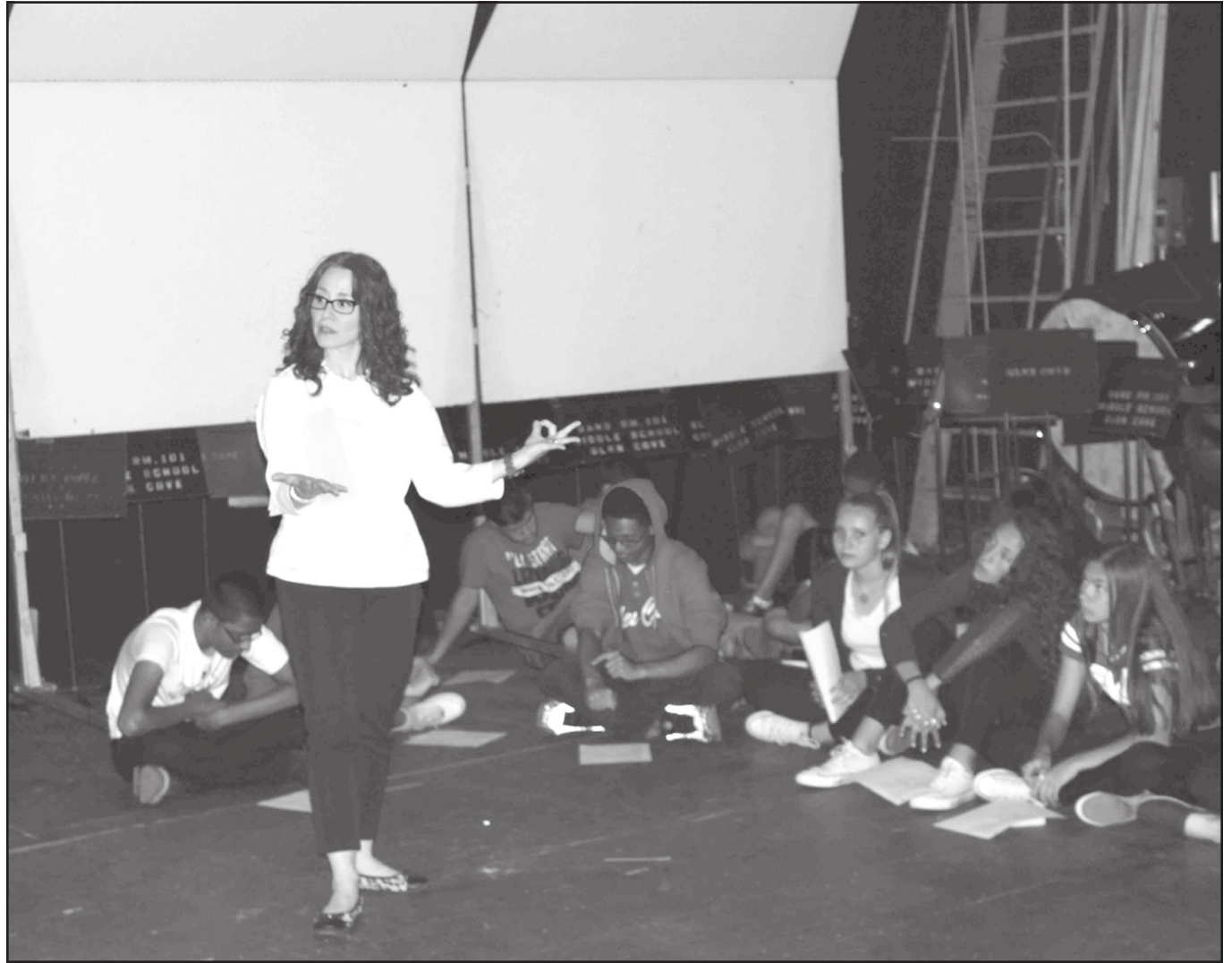
Students Explore Shakespeare

Finley Middle School students had an opportunity to explore Shakespeare's Macbeth during a three-day workshop led by Dr. Valerie Clayman Pye PhD, an assistant professor of Dance and Theater at Manhattanville College.

The workshop, entitled "Exploring Shakespeare's Macbeth through Practice" introduced students to Shakespeare's language through a series of practical exercises that helped to demystify the structure and complexity of Shakespeare's verse, while fostering a deep understanding of how the language functions in performance. During the sessions, students learned about iambic pentameter. They were also asked to stand and read text from the first two acts of Macbeth, which they have been studying in class, while Dr. Pye provided insight to the authors meaning.

"We are looking at Shakespeare's words through an actors perspective to gain better understanding of the text," Dr. Pye said. "By exploring it physically, the students are able to tap into the text and will hear and understand things that are sometimes missed in reading."

Dr. Pye discussed the language of Macbeth with Finley students. Photos courtesy of Glen Cove City School District



Glen Cove Welcomes Panera

Political and business representatives in Glen Cove break bread with team members from Panera Bread during the grand opening ceremony of its newest bakery café located at 1 Village Square at the Piazza in Glen Cove on May

26. Panera Bread, makers of delicious bread items, soups, salads, sandwiches, pastas and more, is owned and operated by Doherty Enterprises, operators of Panera Bread locations in Long Island, Brooklyn, Queens and Staten Island. The

new Glen Cove location will add a total of 60 new jobs to the local economy. The new Panera Bread in Glen Cove offers guests free Wi-Fi on its spacious outdoor patio or via the restaurant chain's second drive-through window on Long Island.



(From L to R): Charles Lavine, assemblyman, Eric Alexander, vision on Long Island, Myrilee Machol, director, Community Development Agency, Lauren Brown, general manager, Panera Bread in Glen Cove, Greg George, vice president of operations for Doherty Enterprises, Reggie Spinello, mayor of Glen Cove, Pam Panzenbeck, councilwoman of Glen Cove, Tab Hauser, resident of Glen Cove, Barbara Pebbles, deputy mayor of Glen Cove, Michael Puntillo Sr. and Michael Puntillo Jr., Jobco Realty & Construction, Mary Stanco, Glen Cove Chamber of Commerce and Delia DeRiggi-Whitton, legislator of Nassau County.



Editor and Publisher

Kevin C. Horton

Photographers

Peter Budraitis

Richard Wilson Jr.

Art Director

Milkenia Horton

Circulation Manager

Robert J. Horton

Layout Design

Jackie Comitino

Staff Writers

John C. O'Connell

Brenda Weck

Gene Auciello

Carol Griffin

Matthew Ross

Sports Editor

Robin Appel

Gazette logo designed by

artist Janice Leotti

Patricia Campbell Horton

Publisher Emeritus

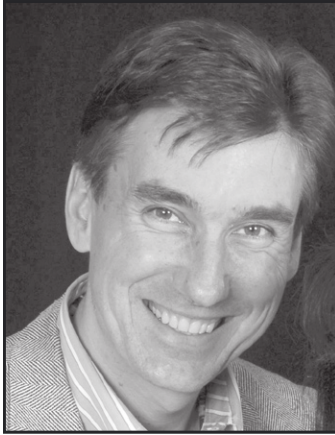
57 Glen Street, Glen Cove, NY 11542

e-mail: mail@goldcoastgazette.net

Phone: 516-671-2360

KCH Publications, Inc.

All rights reserved



Kevin's Corner

by Kevin Horton

Glen Head/Glenwood Business Association

At the June 17th meeting of the Glen Head/Glenwood Business Association local community psychotherapist, Ramona Bobe, will make a presentation on stress management titled "Stress vs. Distress." Attendees will have the opportunity to complete a "Stressful Life Events Inventory" which will help you assess the level of stress you are under and receive tips on how to counteract their effects. The meeting begins at 6 pm and there is a \$10 fee for a very tasteful dinner buffet.

About the Presenter:

Ramona Bobe is a nationally certified and licensed psychotherapist, lecturer and consultant. She has an extensive background in treating individuals, couples and families, providing pathways

to healthy lives and relationships. In addition to being a well known and reputable psychotherapist she is also a highly respected workshop and retreat leader. For thirty years she has maintained a successful private practice in Glen Head, NY and for much of that time was actively involved with the Young Adult Ministry, Diocese of Rockville Center.

Ramona has developed and presented workshops on many topics including "Self-Esteem," "Loving Ourselves & Others," "Assertiveness Training," "Codependency & Addictive Relationships," "Adult Children of Alcoholics" and her infamous "Battle of the Sexes."

Sidoti Receives Masters



Nora Sidoti Magdol of Sea Cliff recently received her master of business administration degree from the Suffolk University Sawyer Business School in a ceremony held at the Blue Hills Bank Pavilion on the Boston (MA) waterfront.

Glen Cove Town Hall Meetings Scheduled for June Mayor Spinello reminds residents to attend upcoming community forums

Glen Cove Mayor Reggie Spinello encourages Glen Cove residents to attend one of two upcoming Town Hall meetings scheduled for June 11 and June 18. The Mayor along with officials from City departments including Public Works, Parks & Recreation, Water, Police, Code Enforcement, the Senior Center and others will be providing updates and informational materials, answering questions, addressing community concerns and listening to recommendations from City residents.

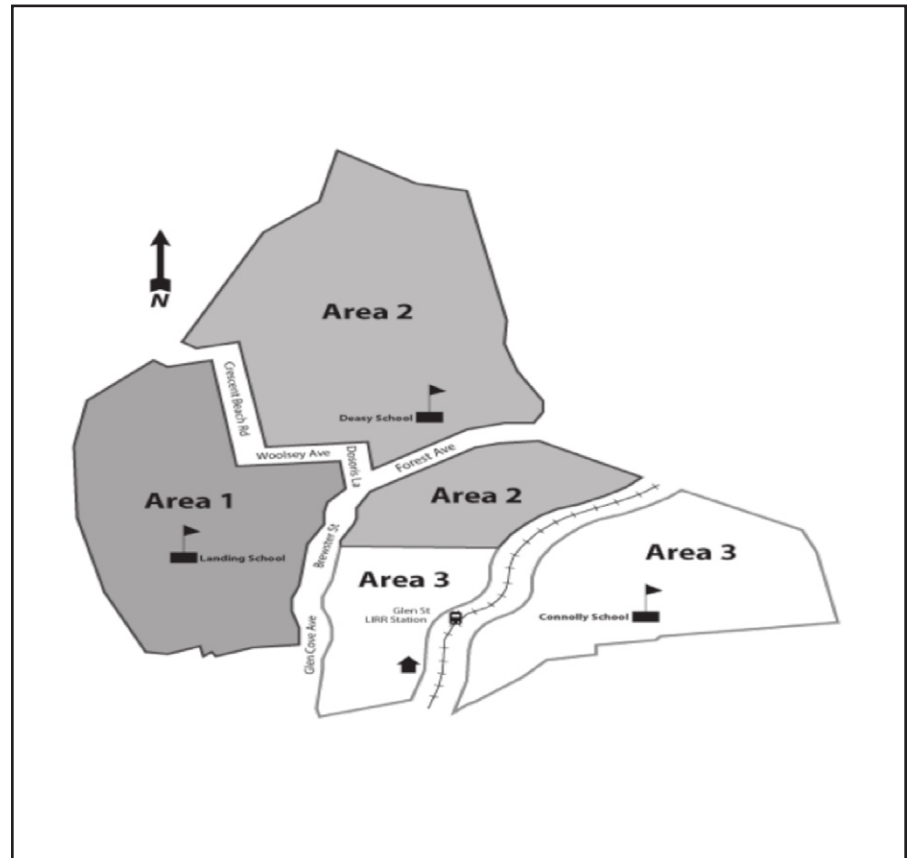
Residents are encouraged to attend a Town Hall meeting on June 11 at 7:00 p.m. at the Deasy School or on June 18 at 7:00 p.m. at the Landing School. All meetings are held in the school's multipurpose rooms. For residents unable to attend last month's

Connolly School Town Hall, the Mayor encourages community members to join him at a school location of their choice. "As we saw at the Connolly School, the Town Hall meeting format gave us an important opportunity to hear first-hand what's on the minds of our residents and provided an open forum for us to share City news and developments in an up close and personal format," said Mayor Spinello. "Our team will be discussing the new sanitation schedule which will go into effect on June 15, exciting summer programs in the City and discuss the latest on the growth and quality of life in Glen Cove." The Mayor's office is accepting questions in advance to ensure all topics can be addressed. Questions may be emailed to sgtripp@cityofglencove.ny.org.

Glen Cove Town Hall Schedule (See Map):

Thursday, June 11th – 7:00 p.m. at Deasy School – Dosoris Lane (Area 2)

Thursday, June 18th – 7:00 p.m. at Landing School – McLoughlin Street (Area 1)



ULTIMATE

Auto Body

24 Hour Towing

81 Glen Cove Avenue
Tel: 516-676-1773

Glen Cove, N.Y. 11542
Fax: 516-676-2942

2014 drinking water quality report

CITY OF GLEN COVE WATER DEPARTMENT
PUBLIC WATER SUPPLY IDENTIFICATION NO. 2902826

ANNUAL WATER SUPPLY REPORT

MAY 2015

The City continues its commitment to provide our residents with drinking water that meets or exceeds quality standards while taking the necessary steps to improve our water delivery system infrastructure.

Reginald Spinello
Mayor

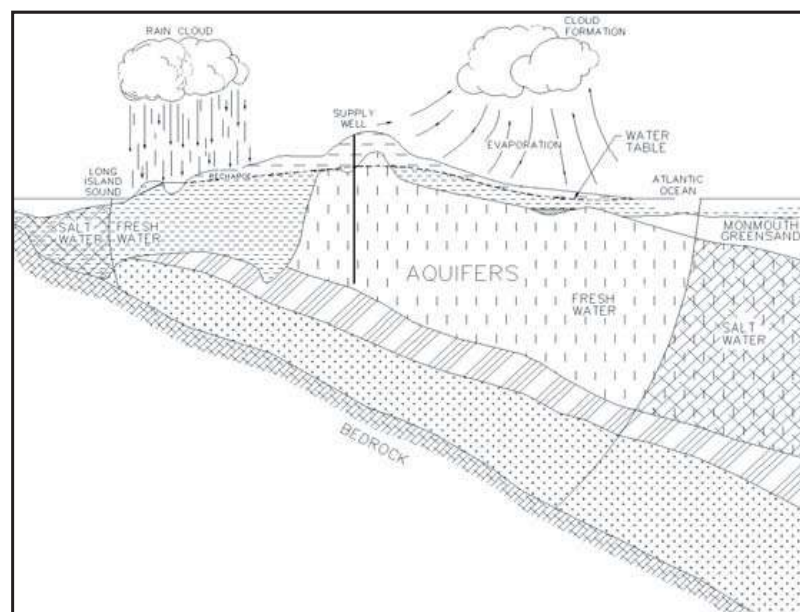
SOURCE OF OUR WATER

The source of water for the City is groundwater pumped from four (4) wells located throughout the community that are drilled into the aquifers beneath Long Island, as shown on the adjacent figure. Generally, the water quality of the aquifers is good to excellent.

In order to ensure that our tap water is safe to drink, the State and the EPA prescribe regulations that limit the amount of certain contaminants in water provided by public water systems. The State Health Department's and the FDA's regulations establish limits for contaminants in bottled water which must provide the same protection for public health.

The population served by the City of Glen Cove during 2014 was 28,000. The total amount of water pumped by the City in 2014 was 1.44 billion gallons, of which approximately 90 percent was billed directly to consumers.

The remaining un-metered water is from uses such as municipal and public school facilities, fire fighting, hydrant flushing, main breaks and undetected service line and water main leaks.



THE LONG ISLAND AQUIFER SYSTEM

WATER TREATMENT

The Water Department treats the water supply before it enters the distribution system. A small amount of chlorine is added to assure the water maintains its bacteria-free quality. Our water is also treated with sodium hydroxide to increase its pH to reduce its corrosivity before it enters the distribution system. This treatment reduces the leaching of copper and lead from household plumbing. Source water from the Kelly Street well is treated by air stripping to remove various volatile organic chemicals. Source water from the two (2) Duck Pond Road wells are treated by granular activated carbon filters to remove various organic chemicals and pesticides. All treatment is approved by and in strict accordance with Nassau County Department of Health standards.

WATER CONSERVATION MEASURES

WATER QUALITY

The underground water system of Long Island has more than enough water for present water demands. However, saving water will ensure that our future generations will always have a safe and abundant water supply.

In 2014, the City of Glen Cove continued to implement a water conservation program in order to minimize any unnecessary water use. The pumpage for 2014 was approximately 3% more in 2013.

Water supply management has long been a practice in Glen Cove. Over the last 20 years, the city has initiated numerous programs geared to reducing water usage. Obviously, continued water conservation efforts will be required to maintain ample supplies.

Some of the major water conservation measures implemented by the City are:

Water Conservation Ordinances – local ordinances have long been in effect to restrict non-potable water use during periods of peak demand, such as Summer periods and fire emergencies. In 1987, the City, in an effort to promote conservation, amended its municipal ordinances and adopted stricter regulations related to:

- Water sprinkling (odd/even) hours are 5:00 a.m. to 9:00 a.m. and then again from 4:00 p.m. to midnight. There is NO watering permitted on the 31st of any month. Sprinkler systems must be equipped with a backflow device and rain sensor.
- Car washing – only self closing shut off valved hose permitted for use.
- Water saving plumbing fittings and fixtures are required on all new residential and commercial construction and in certain alterations and additions to existing construction.

In accordance with State regulations, the City of Glen Cove routinely monitors your drinking water for numerous parameters. We test your drinking water for coliform bacteria, turbidity, inorganic contaminants, lead and copper, nitrate, volatile organic contaminants, total trihalomethanes and synthetic organic contaminants. Over 135 separate parameters are tested for in each of our wells numerous times per year. Over 5,000 tests are taken each year from the distribution system and supply wells. The table presented on page 3 depicts which parameters or contaminants were detected in your drinking water. It should be noted that many of these parameters are naturally found in all Long Island drinking water and do not pose any adverse health affects.

COST OF WATER

Our residential rate structure for each 3 month period is as follows: \$2.36 per 1,000 for the first 45,000 gallons, \$2.66 per 1,000 gallons for the next 45,000 gallons, and \$2.95 per 1,000 gallons for usage over 90,000 gallons.

SOURCE WATER ASSESSMENT

The NYSDOH, with assistance from the local health department, has completed a source water assessment for this system, based on available information. Possible and actual threats to this drinking water source were evaluated. The source water assessment includes a susceptibility rating based on the risk posed by each potential source of contamination and how rapidly contaminants can move through the subsurface to the wells. The susceptibility of a water supply well to contamination is dependent upon both the presence of potential sources of contamination within the well's contributing area and the likelihood that the contaminant can travel through the environment to reach the well. The susceptibility rating is an estimate of the potential for contamination of the source water, it does not mean that the water delivered to consumers is, or will become contaminated. See Section entitled "Water Quality" for a list of the contaminants that have been detected. The source water assessments provide resource managers with additional information for protecting source waters into the future.

Drinking water is derived from four (4) wells (Duck Pond (2), Nancy Court and Kelly Street). The source water assessment has rated all of the wells as having a low susceptibility to potential sources of contamination. However, due to the highly sensitive characteristics of the aquifer, continued vigilance in compliance with water quality protection and pollution prevention programs as well as continued monitoring and enforcement will help to continue to protect groundwater quality.

A copy of the assessment, including a map of the assessment area, can be obtained by contacting the City Water Dept.

The City of Glen Cove Water Department conducts over 5,000 water quality tests throughout the year, testing for over 130 different contaminants which have been undetected in our water supply including:

Arsenic	Chlordane	1,2-Dibromo-3-Chl.Propane	Trans-1,3-Dichloropropene
Cadmium	Total PCBs	Dioxin	cis-1,3-Dichloropropene
Chromium	Propachlor	Chloroacetic Acid	1,1,2-Trichloroethane
Copper	Alachlor	Bromoacetic Acid	1,3-Dichloropropane
Lead	Simazine	Dichloroacetic Acid	Chlorobenzene
Mercury	Atrazine	Trichloroacetic Acid	1,1,1,2-Tetrachloroethane
Langlier Saturation Index	Metolachlor	Dibromoacetic Acid	Bromobenzene
Selenium	Metribuzin	Total Haloacetic Acid	1,1,2,2-Tetrachloroethane
Silver	Butachlor	Chloroform	1,2,3-Trichloropropane
Sodium	2,4-D	Bromodichloromethane	2-Chlorotoluene
Zinc	2,4,5-TP (Silvex)	Dibromochloromethane	4-Chlorotoluene
Color	Dinoseb	Bromoform	1,2-Dichlorobenzene
Turbidity	Dalapon	Total Trihalomethanes	1,3-Dichlorobenzene
Odor	Picloram	Gross Beta	1,4-Dichlorobenzene
Ammonia	Dicamba	Dichlorodifluoromethane	1,24-Trichlorobenzene
Nitrite	Pentachlorophenol	Chloromethane	Hexachlorobutadiene
Chloride	Hexachlorocyclopentadiene	Vinyl Chloride	1,2,3-Trichlorobenzene
Total Hardness	bis(2-Ethylhexyl)adipate	Bromomethane	Benzene
Total Alkalinity	bis(2-Ethylhexyl)phthalate	Chloroethane	Toluene
pH	Hexachlorobenzene	Trichlorofluoromethane	Ethylbenzene
Total Dissolved Solids	Benzo(A)Pyrene	Chlorodifluoromethane	M,P-Xylene
Detergents (MBAS)	Aldicarb Sulfone	1,1-Dichloroethene	O-Xylene
Free Cyanide	Aldicarb sulfoxide	Methylene Chloride	Styrene
Antimony	Aldicarb	Trans-1,2-Dichloroethene	Isopropylbenzene (Cumene)
Beryllium	Total Aldicarbs	1,1-Dichloroethane	N-Propylbenzene
Thallium	Oxamyl	2,2-Dichloropropane	1,3,5-Trimethylbenzene
Lindane	Methomyl	Bromochloromethane	Tert-Butylbenzene
Heptachlor	3-Hydroxycarbofuran	1,1,1-Trichloroethane	1,2,4-Trimethylbenzene
Aldrin	Carbofuran	Carbon Tetrachloride	Sec-Butylbenzene
Heptachloro Epoxide	Carbaryl	1,1-Dichloropropene	4-Isopropyltoluene (P-Cumene)
Dieldrin	Glyphosate	1,2-Dichloroethane	N-Butylbenzene
Endrin	Diquat	Trichloroethene	Methyl Tert-Butyl Ether (MTBE)
Methoxychlor	Endothall	1,2-Dichloropropane	
Toxaphene	1,2-Dibromoethane (EDB)	Dibromomethane	

2014 DRINKING WATER QUALITY REPORT - TABLE OF DETECTED PARAMETERS

Contaminants	Violation (Yes/No)	Date of Sample	Level Detected (Maximum Range)	Unit Measurement	MCLG	Regulatory Limit (MCL or AL)	Likely Source of Contaminant
Inorganic Contaminants							
Copper	No	August 2014	ND - 0.38 0.29 ⁽¹⁾	mg/l	1.3	AL = 1.3	Corrosion of household plumbing systems; Erosion of natural deposits
Lead	No	August 2014	ND - 20.0 3.8 ⁽¹⁾	ug/l	1.3	AL = 15	Corrosion of household plumbing systems; Erosion of natural deposits
Barium	No	03/17/14	0.02 - 0.03	mg/l	n/a	MCL = 20	Naturally occurring
Selenium	No	02/27/14	ND - 25	ug/l	n/a	MCL = 50	Naturally occurring
Fluoride	No	02/26/14	ND - 0.1	mg/l	n/a	MCL = 10	Naturally occurring
Nitrate	No	09/08/14	3.3 - 6.7	mg/l	n/a	MCL = 10	Naturally occurring
Iron	No	03/10/14	ND - 130	ug/l	n/a	MCL = 300	Naturally occurring
Manganese ⁽²⁾	No	--	ND	ug/l	n/a	MCL = 300	Naturally occurring
Sodium	No	03/10/14	ND - 17.8	mg/l	n/a	No MCL ⁽³⁾	Naturally occurring
Zinc	No		ND - 0.03	mg/l	n/a	MCL = 5	Naturally occurring
Magnesium	No	03/17/14	5.7 - 8.4	mg/l	n/a	MCL = 100	Naturally occurring
Nickel	No	--	ND	ug/l	n/a	No MCL	Naturally occurring
Chloride	No	03/11/14	12.0 - 39.3	mg/l	n/a	MCL = 250	Naturally occurring
Calcium	No	03/17/14	14.1 - 20.1	mg/l	n/a	No MCL	Naturally occurring
Sulfate	No	04/07/14	16.9 - 31.2	mg/l	n/a	MCL = 250	Naturally occurring
Perchlorate	No	04/07/14	ND - 2.6	ug/l	n/a	AL = 18 ⁽⁴⁾	Fertilizer
Disinfection By-Products							
Total Trihalomethanes	No	10/06/14	2.2 - 4.4	ug/l	n/a	MCL = 80	Disinfection By-Products
Haloacetic Acid (HAA5)	No	01/27/14	1.4 - 2.8	ug/l	n/a	MCL = 60	Disinfection By-Products
Volatile Organic Contaminants							
Trichloroethene	No	12/04/14	ND - 0.59	ug/l	n/a	MCL = 5	Discharge from factories and dry cleaners, waste sites, spills
Synthetic Organic Contaminants Including Pesticides and Herbicides							
None Detected	--	--	ND	--	--	--	--
Radionuclides							
Gross Alpha	No	07/14/14	0.9 - 4.4	pCi/L	--	MCL = 15	Naturally occurring
Gross Beta		07/14/14	0.6 - 2.46	pCi/L	--	MCL = 50	Naturally occurring
Radium 226 & 228 Combined	No	07/14/14	1.6 - 2.76	pCi/L	--	MCL = 5 ⁽⁵⁾	Naturally occurring
Microbiological							
Total Coliform	No	09/16/14	1 positive out 484	Positive or Negative	n/a	MCL = More than 5% of monthly samples are positive	Commonly found in the environment
Unregulated Contaminant Monitoring Rule⁽⁶⁾							
1,4-Dioxane	No	06/24/14	0.1	ug/l	n/a	MCL = 50	Industrial discharge
Chromium	No	04/01/14	0.5 - 1.0	ug/l	100	MCL = 100	Natural deposits
Strontium	No	08/07/14	ND - 146.0	ug/l	n/a	No MCL	Naturally occurring
Hexavalent Chromium	No	06/26/14	0.4 - 0.5	ug/l	n/a	No MCL	Natural deposits
Chlorate	No	06/24/14	24.0 - 170.0	ug/l	n/a	No MCL	Naturally occurring

Definitions:

Maximum Contaminant Level (MCL) - The highest level of a contaminant that is allowed in drinking water. MCLs are set as close to the MCLGs as feasible.

Maximum Contaminant Level Goal (MCLG) - The level of a contaminant in drinking water below which there is no known or expected risk to health. MCLGs allow for a margin of safety.

Action Level (AL) - The concentration of a contaminant which, if exceeded, triggers treatment or other requirements which a water system must follow. **Milligrams per liter (mg/l)** - Corresponds to one part of liquid in one million parts of liquid (parts per million - ppm).

Micrograms per liter (ug/l) - Corresponds to one part of liquid in one billion parts of liquid (parts per billion - ppb).

Non-Detects (ND) - Laboratory analysis indicates that the constituent is not present.

pCi/L - pico Curies per liter is a measure of radioactivity in water.

⁽¹⁾ - During 2014, we collected and analyzed 30 samples for lead and copper. The 90% percentile level is presented in the table. The action levels for both lead and copper were not exceeded at any site tested. Resampling is scheduled for 2017.

⁽²⁾ - The Food and Nutrition Board of the National Research Council determined an estimated safe and adequate daily dietary intake of manganese to be 2,000-5,000 micrograms for adults. However, many peoples diets lead them to consume even higher amounts of manganese, especially those who consume high amounts of vegetables or are vegetarians. The infant population is of the greatest concern. It would be better if the drinking water were not used to make infant formula since it already contains iron and manganese. Excess manganese produces a brownish color in laundered goods and impairs the taste of tea, coffee and other beverages. Concentrations may cause a dark brown or black stain on porcelain plumbing fixtures. As with iron, manganese may form a coating on distribution pipes. These may slough off, causing brown blotches on laundered clothing or black particles in the water.

⁽³⁾ - No MCL has been established for sodium. However, 20 mg/l is a recommended guideline for people on high restricted sodium diets and 270 mg/l for those on moderate sodium diets.

⁽⁴⁾ - Perchlorate is an unregulated contaminant. However, the State Health Dept. has established an action level of 18 ug/l.

⁽⁵⁾ - MCL is for combined Radium 226 and Radium 228.

⁽⁶⁾ - UCMR3 - Unregulated Contaminant Monitoring Rule 3 is a Federal water quality sampling program where water suppliers sample and test their source water for 1 year. Results will be used by the USEPA to determine if the contaminants need to be regulated in the future.

The Amazing World of 19th Century Entertainment: from the Civil War to 1900.

On Wednesday, May 27 an enthusiastic group at the 1907 Justices Court Building was treated to a multi media trip back into time by historian Barry Rivadue. Rivadue is known for exploring history through the lens of popular culture. He utilized sound recordings, video and power point slides to provide examples of crazes, fads and entertainment such as board games, songs and the popular penny dreadfuls.

The North Shore Historical Museum is dedicated to preserving and interpreting the history of the North Shore through exhibitions, educational programs,

and lectures. Now on display through October 3, 2015 is The Life of the Civil War Soldier, an exhibit focusing not only on the big names and battles but the common soldier in both the Continental and Confederate armies.

Housed in a beautifully-restored 1907 courthouse, a step inside the North Shore Historical Museum is a step back in time.

NSHM is located at 140 Glen Street in Glen Cove. For further information visit northshorhistoricalmuseum.org or call 516 801-1191.



Finley's Bands Earn NYSSMA Gold

Finley Middle School's sixth- and seventh-grade bands were awarded the gold level at the 2015 NYSSMA Majors Festival at Hofstra University on May 19.

At the festival, bands, choruses and orchestras from around Long Island perform and are graded by two adjudicators. The seventh-grade band performed under the direction of teacher

Brittney Frank Rifkind. Rifkind also led the sixth-grade student-musicians along with teacher Keith Schmidt.

Each of the Finley bands played three musical selections, which were also performed at this year's spring concert. The judges were especially impressed with the bands' skillset and musicality. Congratulations to the bands for their hard work and dedication.



Members of Finley's sixth-grade band are pictured with band teachers Brittney Frank Rifkind and Keith Schmidt.



Band teacher Brittney Frank Rifkind (right) is pictured with Finley's seventh-grade band. Photos courtesy of Glen Cove City School District

Sea Cliff Fire Dept. Hosts Music on the Harbor

By Carol Griffin

Once again on May 30, the Sea Cliff Fire Department hosted Music on the Harbor at Sea Cliff Beach. The musical show drew a large crowd of people to enjoy a variety of bands, food and pleasant time at the beach. Several different groups provided lively music including Chickenhead. The firemen provided delicious food and everyone had a chance to get together and enjoy the evening.



Fran Chebuske and Linda Pascale collect tickets. Photo by Carol Griffin
Bartenders were on hand to serve up the drinks, l-r 1st Assistant Chief Mark Vitale, Chief Ernie Longobucco, Captain William Koopman, Matt Sherman, and Ex-Chief Bobby Citko. Photo by Carol Griffin



Chickenhead entertains the crowd. Photo by Carol Griffin

memorial day spread

memorial day spread

PUBLIC NOTICE

PUBLIC HEARING NOTICE

PLEASE TAKE NOTICE that a public hearing will be held as to the following matter:

Agency: Zoning Board of Appeals, Village of Sea Cliff
Date: June 16, 2015
Time: 7:30 pm
Place: Village Hall, 300 Sea Cliff Avenue, Sea Cliff, New York

Subject: Application of Jeanne Anselmo, 3 Prospect Terrace, Sea Cliff, New York to construct a second story addition, which construction and renovation requires variances of: (a) Village Code §138-404 in that the lot area is 1,600 square feet, where a minimum of 7,500 square feet is required; (b) Village Code §138-406 in that the front property line lengths each are 40 feet, where a minimum of 100 feet is required; (c) Village Code §138-409 in that the lot width at the setback lines is 40 feet, where a minimum of 100 feet is required; (d) Village Code §138-410 in that a corner lot is required to comply with the front property line length and the minimum lot width on both frontages, and the existing lot does not comply; (e) Village Code §138-405 in that the lot coverage of the residence is 862 square feet (53.9%), where a maximum of 480 square feet (30%) is permitted; (f) Village Code §138-411 in that the side yards are 3.42 feet and 1.6 feet, where a minimum of 10 feet is required; (g) 138-413.1 in that the second story addition will encroach into the height-setback ratio plane, where no such encroachment is permitted; (h) 138-414.1 in that the addition will result in a total floor area of 1,123 square feet (70%), where the maximum permitted floor area is 800 square feet (50%); (i) 138-1001 in that the construction intensifies a use without providing for the minimum number of off-street parking spaces; and (j) 138-1102, to permit the enlargement of a non-conforming structure, where no such enlargement is permitted. Premises are designated as Section 21, Block 144, Lot 24 on the Nassau County Land and Tax Map.

Application of Steven Dunn, 50 Park Way, Sea Cliff, New York to construct a second driveway and curb cut, which requires a variance of Village Code §138-1007(H) in that the curb cut will be located within four (4) feet of the adjoining side property line, where no such curb cut may be located. Premises are designated as Section 21, Block 119, Lot 19 on the Nassau County Land and Tax Map.

Application of Artaux LLC, 5 Sea Cliff Avenue, Sea Cliff, New York to convert a retail store to a restaurant use, which requires (a) a variance of Village Code §138-1002 in that the premises does not accommodate the minimum required off-street parking, and (b) a special permit pursuant to Village Code §138-902 to permit a restaurant use. Premises are designated as Section 21, Block 96, Lot 220 on the Nassau County Land and Tax Map.

At the said time and place, all interested persons may be heard with respect to the foregoing matters. All relevant documents may be inspected at the office of the Village Clerk, Village Hall, 300 Sea Cliff Avenue, Sea Cliff, New York, during regular business hours.

Any person having a disability

which would inhibit attendance at, or participation in, the hearing should notify the Village Clerk at least three business days prior to the hearing, so that reasonable efforts may be made to facilitate such attendance and participation.

Dated: June 3, 2015

BY ORDER OF THE ZONING BOARD OF APPEALS

-----x
INVITATION TO BIDDERS
BID NO. DPW 2015-0001
VILLAGE OF SEA CLIFF
CONTRACT FOR

Masonry Façade Restoration & Roof Replacement
At Village Hall

PLEASE TAKE NOTICE that sealed bids will be received by the Village of Sea Cliff Clerk/Treasurer, Village Hall, 300 Sea Cliff Avenue, Sea Cliff, N.Y. 11579 until 3:00 p.m. on Thursday July 2, 2015 at which time they will be publicly opened and read aloud and the contract awarded as soon thereafter as practicable.

Bid documents may be obtained at Village Hall, Sea Cliff, N.Y. upon non-refundable payment of \$50.00 in cash or certified check payable to Village of Sea Cliff for each set. Bid Documents will be available beginning Friday June 5, 2015.

This project is funded in part by a grant from the NYS Office of Parks, Recreation and Historic Preservation through Title 9 of the Environmental Protection Act of 1993. All contracts and subcontracts for the project are subject to the Standard Terms and Conditions of the State of New York Master Contract for Grants (MCG), which can be found online at <http://grantsreform.ny.gov>, and Attachment A-1 (A-1), attached hereto.

Note particularly the following requirements:

- The State's right to review and approve every subcontract in excess of \$100,000. MCG IV(B)(2)
- The requirement that subcontracts contain provisions specifying (1) that work accord with the terms of the Master Contract, (2) that nothing can impair the rights of the State under the Master Contract, and (3) that nothing in the subcontract creates a contractual relationship between the subcontractor and the State. MCG IV(B)(2)
- Contractor's responsibility to submit vendor responsibility information to the State, including a Vendor Responsibility Questionnaire for subcontracts that equal or exceed \$100,000. MCG IV(B)(4)
- Non-discrimination requirements MCG IV(I) and A-1 I(I)
- Equal Opportunity provisions, including a requirement that the following provisions be included in construction subcontracts in excess of \$25,000:
 - The Contractor shall not discriminate against employees or applicants for employment because of race, creed, color, national origin, sex, age, disability or marital status;
 - The Contractor shall make and document its conscientious and active efforts to employ and utilize minority group members and women in its work force on State contracts;
 - The Contractor shall undertake or continue existing programs of affirmative action to ensure that minority group members and women are afforded

equal employment opportunities without discrimination. Affirmative action shall mean recruitment, employment, job assignment, promotion, upgrading, demotion, transfer, layoff, or termination and rates of pay or other forms of compensation;

At the request of the State, the Contractor shall request each employment agency, labor union, or authorized representative of workers with which it has a collective bargaining or other agreement or understanding, to furnish a written statement that such employment agency, labor union or representative shall not discriminate on the basis of race, creed, color, national origin, sex, age, disability or marital status and that such union or representative shall affirmatively cooperate in the implementation of the Contractor's obligations herein; and

The Contractor shall state, in all solicitations or advertisements for employees, that, in the performance of the State contract, all qualified applicants shall be afforded equal employment opportunities without discrimination because of race, creed, color, national origin, sex, age, disability or marital status. MCG IV(J)

- MWBE requirements MCG IV(J) and A-1 I(H) or, if the project uses federal funds, DBE requirements MC I(V) and A-2 II(E)(1) [or other guidance provided by the federal agency providing funding]
- Wages and Hours Provisions MCG IV(Q)
- New York State business requirement A-1 I(G)
- Worker's Compensation and Disability Benefits Insurance coverage

PUBLIC NOTICE – SALE OF LIENS CITY OF GLEN COVE, NEW YORK

Notice is hereby given that I shall, on Friday, June 19, 2015 at 10:00 A.M. at Glen Cove City Hall, 9 Glen Street, Glen Cove, New York, sell at public auction the 2014 City Taxes that remain open and unpaid and 2014/2015 School Taxes that remain open and unpaid which will become liens unless the owner, mortgagee, occupant or any other party in interest in such real estate shall pay to the City of Glen Cove the total amount of such unpaid liens with the interest and penalties. Such liens will be sold at the lowest rate of interest not exceeding ten percent (10%) per six month period for which any person shall bid to take the total amount of such unpaid taxes or charges.

The following is a list of the real estate located in the City of Glen Cove upon which liens are to be sold with a brief description of the same by reference to the Nassau County Land and Tax Map. The name of the owner is the same as it appears on the assessment roll of the year in which such unpaid taxes or charges were levied or accrued and the total amounts thereof.

IMPORTANT

THE NAMES OF OWNERS SHOWN ON THIS LIST MAY NOT NECESSARILY BE THE NAMES OF THE PERSONS OWNING THE PROPERTY AT THE TIME OF THIS ADVERTISEMENT. SUCH NAMES HAVE BEEN TAKEN EITHER FROM ASSESSMENT ROLLS PREPARED AS OF AUGUST 31, 2013 OR FROM TAX RECORDS AND FREQUENTLY DIFFER FROM THE NAMES INDICATED AT THE TIME OF PUBLICATION. PL REFERS TO PRIOR LIEN.

Sal Lombardi
Controller

City Tax

Property Owner	Sec\Blk\Lot	Total	PL
REESE, MARTHA	21-5.-1	1,790.91	PL
MOOSE LODGE # 578	21-5.-15	5,186.69	PL
RIVAS J. & PESANTE C.	21-5.-57	49.18	
CONTINENTAL HILL CORP.	21-9.-365	1,379.74	PL
10 MORRIS AVENUE REAL	21-A.-512	7,936.17	
GLEN COVE CREEK, INC.	21-A.-513	16,501.82	PL
DOXEY, JOHN	21-A.-569	14,170.70	PL
DOXEY, JOHN	21-A.-572	36.73	PL
WEISER, JOSEPH	21-A.-652	20,675.28	PL
PEKICH, PETER A.	21-B.-563	373.24	PL
CHASE, JOHN	21-B.-584	193.54	PL
SMITH, RICHARD	21-C.-6	599.46	PL
SMITH, RICHARD J.	21-C.-9	932.95	PL
HEENAN, DENISE	21-N.01-405	175.86	PL
RUSSO, JOHN	21-N.01-491	4,631.97	PL
GLEN COVE PROPERTIES,	21-S.-212.P	427.99	PL
GLEN COVE PROPERTIES,	21-S.-213.C	3,050.57	PL
GLEN COVE PROPERTIES,	21-S.-217.A	49,072.48	PL
GLEN COVE PROPERTIES,	21-S.-843.A	22,091.71	PL
GLEN COVE PROPERTIES,	21-S.-844	57.87	PL

A-1 II(E)

Each bid must be made on the proposal form prepared for this work and in the manner designated therein and be accompanied by a certified check or bid bond in an amount of at least five (5%) percent of the total bid, and shall be enclosed in a sealed envelope addressed to the Village Clerk of the Village of Sea Cliff and marked on the outside with the name and address of the bidder, and the words "BID FOR MASONRY FAÇADE RESTORATION & ROOF REPLACEMENT AT VILLAGE HALL, DPW No. 2015-01.

The successful bidder must comply with all State and Federal Statutes relating to labor and Workers' Compensation.

There will be a mandatory walk through on Tuesday June 16, 2015 at 10:00 AM

The Village reserves the right to reject any and all bids received, to waive any informality in the bids received and to accept that bid which in its judgment best serves the interests of the Village.

All questions related to this project or specifications shall be submitted in writing to the Village at the above address.

By:
Marianne Lennon
Office of the Village Clerk
DATED: June 1, 2015

-----x

PUBLIC NOTICE

GLEN COVE PROPERTIES,	21-S.-895.A	1,781.58	PL
GLEN COVE PROPERTIES,	21-S.-896	18,532.21	PL
GLEN COVE PROPERTIES,	21-S.-897	65,104.01	PL
GLEN COVE PROPERTIES,	21-S.-898	19,674.29	PL
PANJOJ, PEDRO	21-11.-30	1,314.83	
HERMAN, RICHARD J.	21-15.-11	1,801.61	PL
135 GLEN COVE AVE. COR	21-38.-196	2,479.54	PL
135 GLEN COVE AVE. COR	21-38.-202	2,177.59	PL
135 GLEN COVE AVE. COR	21-38.-203	1,975.17	PL
BARRETTA, LUIGI	21-39.-78	56.55	PL
WELLCOME SR., DANIEL	21-199.-461	5,017.50	PL
FRENCH, DAVID	21-229.-41	3,588.31	PL
FRENCH, DAVID	21-229.-42	386.91	PL
135 GLEN COVE AVE. COR	21-244.-55	13,634.05	PL
BROWN, GEO. & ANNIE MA	21-251.-14	2,759.39	PL
BUCHANAN, DAVID W.	21-251.-17	1,704.95	PL
PUTNAM DEVELOPERS	21-256.-37	3,054.07	
FERGUSON, WILLIAM	21-256.-97	3,716.54	PL
GULINO, JOSEPH	21-258.-40	6,582.58	
Property Owner	Sec\Blk\Lot	Total	PL
ZEZULIN, WLADIMIR	21-260.-11	1,376.18	
ORCHARD PROPERTIES	22-3.-15	9,843.53	
MARANGIELLO, MARSHA	22-7.-40	961.22	
RUSSELL PLACE REALTY	22-A.-26.-1	2,085.48	PL
TODISCO, MICHAEL & MAR	22-12.-88	1,938.29	
FERRICCHIO, F.A.& A.	22-15.-211	3,347.56	
FOREST GLEN REALTY, LL	23-1.-228	4,234.96	
FOREST GLEN REALTY, LL	23-1.-229	13,223.61	
CHASE, JEFF	23-2.-243	11,996.92	PL
SMITH, RICK	23-5.-22	2,902.52	PL
SMITH, RICK	23-5.-23	9,166.96	PL
SCHOOL STREET REALTY	23-5.-26	4,784.85	PL
RETOSKE, ROBERT P.	23-8.-20	3,311.74	
SALPETER, JAY & CHERYL	23-D.-202	5,464.68	PL
99 GLEN LLC	23-E.-96	13,870.04	PL
AFSB REALTY, LLC	23-E.-457	615.96	
MAIER, MICHAEL & NANCY	23-E.-511	5,234.84	PL
AFSB REALTY, LLC	23-E.-512	7,715.05	
ROBLES, DAVID	23-E.-548	7,607.64	
DEAN, THOMPSON	23-F.-704.-1	5,528.53	
GRELLA, DOMENICO	23-G.-153	1,462.78	
AHMED, TAREQ	23-11.-126	17,267.54	PL
149 GLEN STREET CORP.	23-11.-135	11,495.04	PL
MC ALEER, JAMES	23-21.-38	2,420.61	
GRELLA, LESLIE & JOSEP	23-31.-26.A	343.45	PL
PAULICH, LIBERO & THER	23-50.-74	2,980.34	
CAVISE, JOHN, MARYANN,	23-55.-51	2,920.30	PL
TODESCO, PETER	23-55.-61	2,262.28	
JOHNSON, BENJAMIN	23-55.-133	2,324.88	PL
RIZZO, GLENN	23-55.-155	1,156.07	
PEKICH, PETER A.	23-55.-427	8,274.57	PL
PEKICH, PETER A.	23-55.-428	4,277.25	PL
TODESCO, PETER	23-55.-429	2,239.64	PL
RHEIN, JOHN	23-61.-2	2,278.27	
SYDOR, MARGARET ANNE	30-D.01-578	3,827.85	
VENIA, CATHERINE	30-D.01-582	3,400.12	
MANNO, IMMACOLATA	30-47.-12	2,638.27	
VISCO, MARIA	30-48.-43	3,410.83	PL
CICATIELLO, VIRGINIA	30-52.-19	3,175.47	PL
GLOBEX, INC.	30-67.-2	1,560.20	
WEBER, MARVIN & AUDRE	30-69.-1	4,160.00	PL
D'ALTERIO, JOSEPH/MALV	30-76.-19	4,698.85	PL
TODD, PAUL & KATHLEEN	30-76.-42	1,729.80	
ASIP, SHARON S.	30-80.-4	4,233.05	PL
BAUMAN, ALLEN & SUSAN	30-82.-34	1,704.54	
IONESCU, GABRIEL & SUZ	30-91.-18	4,335.04	
ZANGERA, THERESE	30-92.-5	9,429.65	
MORRIS, C. & M.	31-2.-123	767.95	
MORRIS, C. & M.	31-2.-124	97.38	
DOXEY, JOHN	31-2.-128	193.54	PL
KIEL, MARION	31-2.-278	2,400.70	
BERISHA, NEZIR & NAILE	31-3.-125	12.37	
MARROGUIN, ILEANA CRU	31-4.-27	1,812.79	
PAULICH, LIBERO & ANTH	31-5.-209	1,336.42	
COFFEY, MARIE	31-6.-11	1,023.70	
WLESKOFF, REV. GLEB	31-E.-16	2,652.61	
MORGAN COURT OF GLE	31-E.-358	1,662.06	
MORGAN COURT OF GLE	31-E.-360	1,846.18	
MORGAN COURT OF GLE	31-E.-370	1,625.23	
FARR, PATRICIA	31-F.-13	1,217.41	
TIRADO, CATALINA	31-F.-18	1,235.45	
EDWARDS, GILES G.	31-F.-80	1,660.44	
BORAH, GREGORY & JUA	31-11.-34	3,481.13	
GRAF, SANDRA	31-17.-412	1,215.97	
MAHER, MICHAEL & NANC	31-18.-141	2,706.37	PL
DOMAGALA, STANLEY & J	31-24.-28	2,389.88	PL
BANCALE, GREGORY	31-26.-46	2,803.59	PL
SPAGNOLETTI, M. & C.	31-37.-9	2,972.97	
BERMUDEZ, JULIA	31-38.-6	2,148.13	PL
SUAREZ, JOSE & MERCED	31-50.-120	2,737.31	
FINGERIT, MICHAEL J.	31-68.-21	2,752.04	

SCHLIMER, MITCHELL & S	31-71.-19	2,126.72	
KAVANAGH, P.C., EDWAR	31-85.-28.U-216	7,909.85	PL
SCRENCI M.D., CATHERIN	31-85.-28.U-314	5,015.11	PL

School Tax

Property Owner	Sec\Blk\Lot	Total	PL
METROPOLITAN OF GLEN	21-3.-520	46,472.12	
11 CAPOBIANCO STREET,	21-4.-31	2,400.49	
REESE, MARTHA	21-5.-1	3,772.7	PL
MOOSE LODGE # 578	21-5.-15	11,379.79	PL
% GLASS, SAMUEL	21-5.-54	13,353.84	
RIVAS J. & PESANTE C.	21-5.-57	104.15	PL
CONTINENTAL HILL CORP.	21-9.-365	3,022.79	PL
10 MORRIS AVENUE REAL	21-A.-512	17,415.39	
GLEN COVE CREEK, INC.	21-A.-513	36,218.60	PL
FAIR HOUSING DEV FUND	21-A.-514	5,838.35	
FAIR HOUSING DEV FUND	21-A.-515	5,408.69	
FAIR HOUSING DEV FUND	21-A.-516	6,251.46	
FAIR HOUSING DEV FUND	21-A.-517	5,871.38	
FAIR HOUSING DEV FUND	21-A.-518	5,706.13	
FAIR HOUSING DEV FUND	21-A.-519	5,111.23	
FAIR HOUSING DEV FUND	21-A.-520	5,408.69	
FAIR HOUSING DEV FUND	21-A.-521	3,971.01	
FAIR HOUSING DEV FUND	21-A.-522	5,788.77	
FAIR HOUSING DEV FUND	21-A.-523	5,259.96	
FAIR HOUSING DEV FUND	21-A.-524	4,896.41	
FAIR HOUSING DEV FUND	21-A.-525	5,012.08	
FAIR HOUSING DEV FUND	21-A.-526	5,425.22	
FAIR HOUSING DEV FUND	21-A.-527	5,293.02	
FAIR HOUSING DEV FUND	21-A.-528	4,103.21	
FAIR HOUSING DEV FUND	21-A.-529	4,681.58	
FAIR HOUSING DEV FUND	21-A.-530	3,640.51	
FAIR HOUSING DEV FUND	21-A.-531	4,004.07	
FAIR HOUSING DEV FUND	21-A.-532	4,004.07	
FAIR HOUSING DEV FUND	21-A.-533	4,218.88	
FAIR HOUSING DEV FUND	21-A.-534	5,259.96	
FAIR HOUSING DEV FUND	21-A.-535	5,177.33	
FAIR HOUSING DEV FUND	21-A.-536	4,301.51	
FAIR HOUSING DEV FUND	21-A.-537	5,226.91	
FAIR HOUSING DEV FUND	21-A.-538	4,284.97	
FAIR HOUSING DEV FUND	21-A.-539	4,284.97	
FAIR HOUSING DEV FUND	21-A.-540	4,185.84	
DOXEY, JOHN	21-A.-569	30,554.42	PL
DOXEY, JOHN	21-A.-572	74.65	PL
WEISER, JOSEPH	21-A.-652	40,397.10	PL
L & L ASSOC. HLDG. CORP	21-A.-677	12,411.26	
DISIMONE J. & SIMMONS, D	21-B.-203	2,769.81	
PEKICH, PETER A.	21-B.-563	831.27	PL
CHASE, JOHN	21-B.-584	428.03	PL
THE METROPOLITAN OF G	21-B.-615	848.00	
SMITH, RICHARD	21-C.-6	566.84	PL
SMITH, RICHARD J.	21-C.-9	2,087.15	PL
FROG HOLLOW BUILDERS	21-C.-40.A	11,622.10	
ANTICO, LINDA S	21-C.-456	2,962.50	
GALLO, JOHN & MARIE	21-H.-116	15,929.71	
WIRKOWSKI, E.	21-N.01-57	4,110.59	
HEENAN, DENISE	21-N.01-405	388.39	PL
RUSSO, JOHN	21-N.01-491	9,093.78	PL
GLEN COVE PROPERTIES,	21-S.-212.P	933.55	PL
GLEN COVE PROPERTIES,	21-S.-213.C	6,690.59	PL
GLEN COVE PROPERTIES,	21-S.-217.A	107,717.28	PL
55 SEA CLIFF AVE., INC.	21-S.-318	52,839.73	
GLEN COVE PROPERTIES,	21-S.-843.A	48,489.45	PL
GLEN COVE PROPERTIES,	21-S.-844	121.06	PL
ENF INC.	21-S.-849	7,967.57	
GLEN COVE PROPERTIES,	21-S.-895.A	3,904.92	PL
GLEN COVE PROPERTIES,	21-S.-896	40,675.67	PL
GLEN COVE PROPERTIES,	21-S.-897	142,909.48	PL
GLEN COVE PROPERTIES,	21-S.-898	43,182.76	PL
PANJOJ, PEDRO	21-11.-30	6,003.59	
POTTER, SANDRA	21-14.-6	10,433.04	
HERMAN, RICHARD J.	21-15.-11	3,828.35	PL
MICEIKA, WILLIAM & GLAD	21-17.-9	3,885.87	PL
NATIELLO, THOMAS	21-19.-129	4,027.36	
ANTAL, JULIA	21-24.-29	275.29	
135 GLEN COVE AVE. COR	21-38.-152	20,386.76	PL
135 GLEN COVE AVE. COR	21-38.-196	5,557.41	PL
135 GLEN COVE AVE. COR	21-38.-202	4,879.89	PL
135 GLEN COVE AVE. COR	21-38.-203	4,425.69	PL
BARRETTA, LUIGI	21-39.-78	120.68	PL
WELLCOME SR., DANIEL	21-199.-461	11,008.36	PL
VULPIS, JOSEPH & GLORI	21-206.-388	3,391.37	
FRENCH, DAVID	21-229.-41	6,290.58	PL
FRENCH, DAVID	21-229.-42	447.88	PL
PERCIBALLI, VINCENT	21-240.-5	7,355.65	
PINEDO, JULIO & MARIA	21-244.-34	1,974.91	PL
135 GLEN COVE AVE. COR	21-244.-55	29,923.28	PL
135 GLEN COVE AVE. COR	21-244.-60	80,789.21	PL
135 GLEN COVE AVE. COR	21-244.-66	11,565.50	PL
NESKY, VALERIE	21-246.-14	3,082.93	
LAZZINNARO, FRANCESC	21-248.-15	3,328.34	
HARRIS, ANN BALTIMORE	21-251.-9	1,979.62	

PUBLIC NOTICE

Property Owner	Sec/Blk/Lot	Total	PL
YORK, APRIL M.	21-251.-13	3,715.98	PL
BROWN, GEO. & ANNIE MA	21-251.-14	4,345.58	PL
WALLER, DOLORES	21-251.-16	3,633.37	PL
BUCHANAN, DAVID W.	21-251.-17	3,819.41	PL
HUDSON, ADELINE	21-252.-4	3,819.48	PL
PUTNAM DEVELOPERS	21-256.-37	13,968.66	PL
FERGUSON, WILLIAM	21-256.-97	5,954.02	PL
GULINO, JOSEPH	21-258.-40	7,020.19	PL
ZEZULIN, WLADIMIR	21-260.-11	4,444.72	PL
PETRUCCI, MARY G.	22-2.-132	7,689.14	PL
SACCHETTA, JOHN	22-2.-246	2,824.60	PL
SACCHETTA, JOHN	22-2.-247	200.89	PL
ORCHARD PROPERTIES	22-3.-15	20,758.19	PL
MARANGIELLO, MARSHA	22-7.-40	4,384.13	PL
ANZALONE, SUSAN	22-7.-42	6,356.68	PL
RUSSELL PLACE REALTY	22-A.-26.-1	2,326.39	PL
BASILE, JOSEPH L., JR.	22-A.-195	3,230.63	PL
PAGANO, VINCENT & MAR	22-A.-436	5,799.78	PL
SANTOS, MOISES GODINE	22-10.-96	3,023.78	PL
SOLOMITA, PHILIP & LENA	22-12.-8	4,657.88	PL
SINISCALCHI, PATRICK A.	22-12.-53	378.93	PL
TODISCO, MICHAEL & MAR	22-12.-88	7,939.44	PL
FERRICCHIO, F.A. & A.	22-15.-211	4,621.66	PL
MORRA, GUISEPPE & MAR	22-16.-112	3,371.96	PL
GREGORIO, MELISSA	22-20.-13	2,367.33	PL
FOREST GLEN REALTY, LL	23-1.-228	9,290.54	PL
FOREST GLEN REALTY, LL	23-1.-229	29,022.32	PL
FOREST AVE. COMMONS,	23-2.-239	11,035.29	PL
CHASE, JEFF	23-2.-243	26,329.50	PL
SMITH, RICK	23-5.-22	6,365.60	PL
SMITH, RICK	23-5.-23	19,829.64	PL
SCHOOL STREET REALTY	23-5.-2	10,497.65	PL
BECKER-MORA, JODI ANN	23-8.-5	3,524.51	PL
RETOSKE, ROBERT P.	23-8.-20	7,424.75	PL
MOZA, BLANCA	23-D.-33	13,220.31	PL
SALPETER, JAY & CHERYL	23-D.-202	11,106.68	PL
ABREU, ROLANDO A.	23-D.-517	14,354.79	PL
99 GLEN LLC	23-E.-96	26,608.08	PL
E.H.E. CORP.	23-E.-372	11,008.36	PL
E.H.E. CORP.	23-E.-404	11,611.92	PL
AFSB REALTY, LLC	23-E.-457	2,604.95	PL
MAIER, MICHAEL & NANCY	23-E.-511	10,822.66	PL
AFSB REALTY, LLC	23-E.-512	32,815.46	PL
ROBLES, DAVID	23-E.-548	14,629.74	PL
DEAN, THOMPSON	23-F.-704.-1	12,398.78	PL
GREEN COVE LLC	23-F.02-1	3,236.44	PL
GRELLA, DOMENICO	23-G.-153	5,761.77	PL
TURCIOS, OSCAR	23-H.-427	4,271.17	PL
AHMED, TAREQ	23-11.-126	33,293.66	PL
149 GLEN STREET CORP.	23-11.-135	20,897.47	PL
KAROUSOS, EMANUEL & Z	23-16.-117	2,078.99	PL
BORUTA, VINCENT	23-28.-5	5,854.87	PL
LA DUCA, SALVATORE	23- 28.-127.U-204	877.45	PL
GRELLA, LESLIE & JOSEP	23-31.-26.A	94.24	PL
CAVALLONE, M.	23-42.-143	3,420.13	PL
ARCHAMBAULT, WILLIAM	23-44.-18	3,042.79	PL
AYRAL-KABBARA, SEYDA	23-45.-16	4,837.80	PL
PAULICH, LIBERO & THER	23-50.-74	4,841.33	PL
EMANCIPATION CORP	23-55.-2	10,223.25	PL
CAVISE, JOHN, MARYANN,	23-55.-51	6,102.74	PL
TODESCO, PETER	23-55.-61	5,069.93	PL
JOHNSON, BENJAMIN	23-55.-133	5,210.39	PL
RIZZO, GLENN	23-55.-155	2,119.48	PL
PEKICH, PETER A.	23-55.-427	18,158.23	PL
PEKICH, PETER A.	23-55.-428	9,383.39	PL
TODESCO, PETER	23-55.-429	5,019.12	PL
ENSKO, LINDA & SHARON	23-58.-17	2,599.76	PL
DURSO, JOSEPH & LISA	23-65.-7	9,168.21	PL
POWERS, FRANCIS	23-69.-13	7,506.73	PL
SACKS, PRESS & LACHER	23-69.-34	7,511.81	PL
WEBBER, KERRY	30-D.-85	6,317.57	PL
MURRAY, MARGARET	30-D.01-535	415.80	PL
SYDOR, MARGARET ANNE	30-D.01-578	6,951.58	PL
VENIA, CATHERINE	30-D.01-582	6,703.71	PL
RITTER JR., EDWARD A	30-D.02-37	2,475.16	PL
BONIS, ALEX	30-D.03-2	2,312.18	PL
MARIANA, DANIEL	30-D.03-6	5,315.60	PL
TOBIA, WILLIAM	30-37.-56	6,203.90	PL
KURRE, ROBERT	30-38.-145	9,860.00	PL
MANNO, IMMACOLATA	30-47.-12	2,924.43	PL
ROBERT JAMES CONTRA	30-48.-1	6,020.12	PL
VALENSISI, FRANK	30-48.-8	3,363.93	PL
BROOKS, DENISE	30-48.-63	5,836.62	PL
CICATIELLO, VIRGINIA	30-52.-19	6,879.42	PL
DOSORIS REALTY, LLC	30-54.-1	2,871.24	PL
KAYIS, TELAT	30-56.-41	4,836.38	PL
SACCHETTO, GIOVANNI &	30-57.-9	2,943.49	PL
DING, WEI	30-64.-22	3,537.61	PL
PAULICH, ANTHONY & GUN	30-64.-47	3,869.72	PL
MANNARINO, DINA	30-64.-75	3,526.92	PL
GLOBEX, INC.	30-67.-2	5,287.51	PL
WEBER, MARVIN & AUDRE	30-69.-	7,133.37	PL
MOLESKY, THOMAS & DIA	30-73.-8	4,482.33	PL
D'ALTERIO, JOSEPH/MALV	30-76.-19	7,865.42	PL
TODD, PAUL & KATHLEEN	30-76.-42	6,984.64	PL
DEANGELIS, ANGELO&MA	30-79.-4	3,476.33	PL
ASIP, SHARON S.	30-80.-4	7,870.92	PL
BAUMAN, ALLEN & SUSAN	30-82.-34	3,251.54	PL
ROMANO, THOMAS	30-91.-17	4,128.67	PL
IONESCU, GABRIEL & SUZ	30-91.-18	18,915.71	PL
JONES, ELISABETH NOEL	30-92.-2	7,615.44	PL
ZANGERA, THERESE	30-92.-5	20,232.88	PL
MORRIS, C. & M.	31-2.-123	1,659.25	PL
MORRIS, C. & M.	31-2.-124	428.03	PL
DOXEY, JOHN	31-2.-128	428.03	PL
KIEL, MARION	31-2.-278	4,973.53	PL
BERISHA, NEZIR & NAILE	31-3.-125	21.52	PL
TROFFA, ANTHONY P.	31-4.-11	26,654.50	PL
MARROGUIN, ILEANA CRU	31-4.-27	8,284.04	PL
SAVINO, MARIA	31-5.-208	5,458.26	PL
PAULICH, LIBERO & ANTH	31-5.-209	6,102.47	PL
COFFEY, MARIE	31-6.-11	1,377.77	PL
BRODNANSKY, MARIAN &	31-7.-283	2,517.98	PL
MOROSOV, V.B. & I.H.	31-9.-13	2,373.45	PL
WLESKOFF, REV. GLEB	31-E.-16	4,105.97	PL
BASILE, JOHN & TRAVIS	31-E.-346	2,373.45	PL
MORGAN COURT OF GLE	31-E.-354	1,891.73	PL
MORGAN COURT OF GLE	31-E.-355	3,640.51	PL
MORGAN COURT OF GLE	31-E.-356	3,640.51	PL
MORGAN COURT OF GLE	31-E.-358	3,723.13	PL
MORGAN COURT OF GLE	31-E.-360	4,136.26	PL
MORGAN COURT OF GLE	31-E.-370	3,640.51	PL
CASTRONOVO, CRAIG	31-F.-6	2,483.76	PL
FARR, PATRICIA	31-F.-13	4,638.07	PL
TIRADO, CATALINA	31-F.-18	2,742.77	PL
EDWARDS, GILES G.	31-F.-80	3,719.49	PL
DELACOUR, WILLIS & MAR	31-J.-420.-2	14,914.24	PL
HERBERT, GERARD & SUS	31-10.-10	3,516.34	PL
HERBERT, GERARD & SUS	31-10.-18	184.84	PL
STANCO, ARABELLA & RO	31-16.-295	3,641.99	PL
GRAF, SANDRA	31-17.-412	3,711.02	PL
GUARINO, VINCENT & ANG	31-18.-82	2,876.59	PL
MAHER, MICHAEL & NANC	31-18.-141	4,720.7	PL
PETHERICK, MICHELE J.	31-20.-82	1,561.23	PL
CHATTERJEE, NISITH	31-20.-90	3,437.26	PL
PINNOLA, HELEN	31-21.-128	2,911.38	PL
WILSON, BURGESS & WIE	31-24.-15	3,227.45	PL
DOMAGALA, STANLEY & J	31-24.-28	5,356.2	PL
BANCALE, GREGORY	31-26.-46	6,257.5	PL
JAIKERAN, MADHAI	31-29.-109	2,360.35	PL
CRUZ, YESENIA	31-33.-28	4,690.81	PL
STONE, WENDELL & ELAIN	31-35.-11	3,651.51	PL
CARRUCCI, ANN	31-36.-347	379.67	PL
SPAGNOLETTI, M. & C.	31-37.-9	6,664.5	PL
BERMUDEZ, JULIA	31-38.-6	4,813.79	PL
ROZENBLATT, ASSAF	31-47.-411	25,800.46	PL
MOLIN, LINDA	31-49.-16	2,498.52	PL
SHIRAZI, HENGAMEH	31-49.-636	1,838.48	PL
KERN, KEVIN A.	31-50.-3	2,501.91	PL
KERN, KEVIN	31-50.-6	3,388.53	PL
SUAREZ, JOSE & MERCED	31-50.-120	5,216.47	PL
FIRSCHING, JOSEPH V.	31-51.-81	6,177.10	PL
ALVAREZ, GERTRUD H.	31-51.-436	5,717.70	PL
PAPASIDERO, S. & V.	31-51.-482	30,483.23	PL
TRENTINI, DONNA	31-51.-590	8,143.39	PL
HAUG, FRANCES	31-52.-8	1,019.95	PL
BRESKY, MARC S. & ALIZA	31-60.-14	4,131.73	PL
CUCINELLA, M	31-60.-32	3,620.84	PL
BESSEL, ESTATE OF FRO	31-65.-8	2,599.35	PL
FINGERIT, MICHAEL J.	31-68.-21	5,249.51	PL
WEPPLER, MARGARET	31-70.-12	4,206.94	PL
SAKARIS, ANTOINETTE	31-70.-30	6,791.29	PL
SCHLIMMER, MITCHELL & S	31-71.-19	9,721.72	PL
BRASIELLO, NICOLA	31-74.-7	6,059.23	PL
ROMERO, DONNA	31-74.-13	6,059.23	PL
FAKIRIS, GEORGE	31-81.-15	12,421.37	PL
GRAZIOSE, LEEANN	31-82.-6	6,508.70	PL
TARANTO, VINCENT & SU	31-85.-28.U-214	3,614.09	PL
TARANTO, VINCENT	31-85.-28.U-215	1,922.34	PL
KAVANAGH, P.C., EDWAR	31-85.-28.U-216	16,486.84	PL
SCRENCI M.D., CATHERIN	31-85.-28.U-314	10,451.22	PL

For Gazette advertising
information call
671-2360

Name the Celebrity



says, "I'm a Medford man. Medford, Oregon. And if I say it, I mean it, and if I mean it, of course, I'll swear it."

Last Week's Celebrity

Last week's celebrity was Buck Henry. He was a member of an improvisational theater group, The Premise, in Greenwich Village, early in the 1960s, along with George Segal. He has appeared in more than 40 films including "The Graduate", "Catch-22", "Candy", "Heaven Can Wait", and "Grumpy Old Men." He has many writing credits including "Candy", "The Owl and the Pussy Cat", "What's Up, Doc?", "The Day of the Dolphin", "Protocol", and "To Die For." He directed three actors in Oscar nominated performances: Warren Beatty, Jack Warden and Dyan Cannon, all of them in "Heaven Can Wait" (1978). Henry hosted NBC's "Saturday Night Live" ten times, appearing first in 1976, and for the last time in 1980. It became a tradition in those years that he host the last show of each season. His frequent host record would be broken when Steve Martin hosted the 14th season finale in 1989. The producers of SNL would almost always include a Samurai sketch when he hosted. During the Oct. 30, 1975 episode, John Beluschi accidentally cut our celebrity near the eyebrow with his Samurai sword. Henry's head began to bleed and he was forced to wear a large bandage on his forehead for the rest of the show. As a tribute to this on-air injury, the rest of the cast wore bandages over their eyebrows. At age 84, he is still active and has appeared on TV shows "Will and Grace", "30 Rock", and "Hot in Cleveland."

Correct Callers

Don Adams, Roberta Pezza, Will and Babs Hutchins, James W. Foote, Mario Moccia, Joseph Saepia

This week's celebrity was born in Cincinnati, Ohio on Sept. 19, 1888. Possessing a weak chin and shifty eyes, he played movie villains or comedic incompetent characters in over 75 films. In his career, he had several good character rolls and will probably be best remembered for two in particular. One was as "Granville Sawyer", the nervous, ill-tempered Macy's Department Store psychiatrist, in "Miracle on 34th Street." He tries to evaluate "Kris Kringle", played by Edmund Gwenn and attempts to prove he is not Santa Claus. "Mr. Kringle" realizes that our celebrity is the one with the "problem", evident by his continuing "tug" on his eyebrow. The other role was in "Double-Indemnity", as "Mr. Jackson", the man who has a brief conversation with Fred MacMurray, who is playing a stand-in for Barbara Stanwyck's husband before faking his death. The insurance company doesn't want to pay out the claim for the death and "Mr. Jackson" is the last man to see the deceased alive. When the insurance company asks him if he'll swear in court that the man he saw on the train is not the man in the pictures of the deceased, he

Subscribe today to the Gold Coast Gazette's special E-edition

Name: _____

Address: _____

City: _____ State: _____ Zip: _____

Phone Number: _____

Credit Card #: _____ exp. _____

Email: _____

Check One

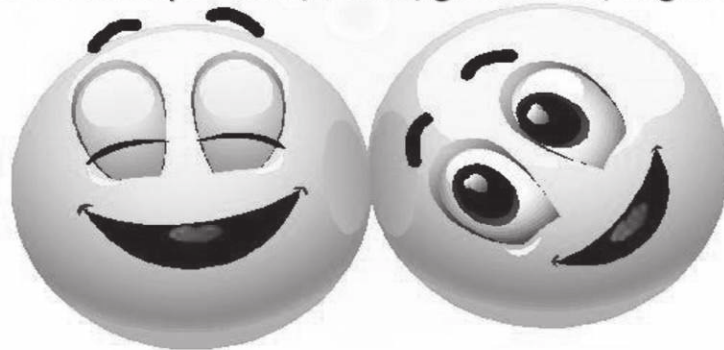
Regular Rates: 1 Year \$14.95 2 Years \$24.95 3 Years \$34.95

DJ and Photo Booth Package

Graduations, Summer BBQ's, Block Parties

4 Hours of Music with Party Lights

125 Giveaways – hats, beads, glow sticks, & glasses



Unlimited Black & White or COLOR Photos

with the Pixie Photo Booth

Customized Logo and Friendly Attendant

Includes lots of FUN Props!

(631) 220-4343

HappyFacesEntertainment@gmail.com

Having a Party? No Worries...

We'll Bring the FUN!

Dj Dan will set the mood with non-stop music and give away that will get your guests dancing! Happy Faces Photo Booths will bring their open air booth that fits lots of your friends and prints in just 7 seconds! Your party will be a HUGE HIT!



\$1200 for 4 hour package

(Offer good until 8/31/15)

(Slightly higher packages available for weddings, mitzvahs, sweet sixteens etc.)

COMBINING
QUALITY AND
COST IS ONE OF
THE THINGS
WE DO BEST.



Knowing the families in our community, we understand quality service and cost are both important. We also know people are more comfortable when they have choices. Our list of services assures your family the dignity they deserve at a cost you determine. If you ever have a question or would like more information, feel free to call or stop by.

**DODGE-THOMAS
FUNERAL HOME**

676-1180

26 FRANKLIN AVE. • GLEN COVE

GLY Religious Store

Vestments
Chalices
Pyxes

We can help you select by phone and deliver to any location on L.I.
Call us at (516) 656-0330
32-34 School Street
Glen Cove, NY
Open Mon-Sat 9-5

North Shore Monuments

Plaques and Sandblasting

QUALITY WORKMANSHIP
FOR FOUR GENERATIONS

Quality Granite In All Colors
Work done in all cemeteries

759-2156

Showroom:
677 Cedar Swamp Rd.
Brookville, N.Y. 11545
Mon-Fri: 10am to 6pm
Saturdays 4pm (closed Sunday)

Obituaries

Peggy Neice

Neice, Peggy of Sea Cliff, NY on June 2, 2015. Beloved wife of the late Brud. Loving mother of Elaine Neice and Kenny Neice (Joanna). Cherished Nana of Drew Davies and Abigail Neice. She is also survived by many nieces, nephews, relatives and friends. Visiting Fri. 7-9 pm and Sat. 2-4 & 7-9 pm at Whitting Funeral Home 300 Glen Cove Ave., Glen Head, NY 11545 www.whitting.com Funeral Service 1 pm Sunday at the funeral home. Interment Private. In lieu of flowers contributions may be made to Warriors Odyssey www.warriorsodyssey.org or Fight Hard Smile Big www.fighthardsmilebig.org both charities are for pediatric cancer.

Donald Albin

Albin, Donald J. CPT, USA (RET) of Glen Cove, NY on May 18, 2015. Beloved husband of Marion "Mattie" McEntee-Albin, LTC, USA (RET). Loving step-father of Patrick (Allison), Andrew (Christina) and Deirdre McEntee.. Adored grandfather of Rianna, William, Logan, Sally Rose and Ryan. Dear brother of Frederick, Michael (Lory) Albin and Ann (Michael) Nalveaiko. Dear brother-in-law of Lynn McDonald, niece Tegan, nephews CJ and Jesse. Also survived by many loving aunts, uncles and cousins and the many wonderful friends that he knew through the Glen Cove and Manhasset communities, Marine Corps, United States Army and his business MacGregor Craftsman.

Donnie was a native of Glen Cove, born to Donald Joseph and Helen (Peet) Albin. He attended St. Louis University for one year, left and joined the Marines, where he served in Vietnam. During his tour he was awarded the Purple Heart. After his discharge, he returned to Glen Cove and continued his education. He earned a BA Degree from CW Post and a MBA from St. John's University. Donnie still had a passion to serve his country and he joined the United States Army, where he was selected to be a member of the Special Forces (Green Beret's). Upon his military retirement, Donnie was a

self employed flooring contractor for MacGregor Craftsman.

Donnie lived his life to the fullest and he did it his way. He will be remembered for this patriotism and zest for life. Funeral Mass at St. Patrick's Church, Glen Cove, NY. Interment Locust Valley Cemetery, Locust Valley, NY. In lieu of flowers contributions may be made to the Long Island State Veterans Home, Stony Brook, NY. Arrangements by Whitting Funeral Home.

Harry Ajamian

Ajamian, Harry "Hap" of Sea Cliff, NY on June 1, 2015. Beloved husband of the late Joan. Loving father of James (Eileen) Ajamian and Amanda (Michael) Fallon. Cherished grandfather of Patrick and Megan Fallon. Dear brother of Chuck and Sam. He is also survived by many nieces and nephews. Funeral service Saturday 1 pm, United Methodist Church of Sea Cliff, Sea Cliff, NY 11579. Interment Locust Valley Cemetery, Locust Valley, NY. Contributions may be made to Nassau County Firefighters Operation Wounded Warrior. Arrangements by Whitting Funeral Home

Joseph Oddo

ODDO, Joseph of Glen Head, NY May 30, 2015. Beloved husband of Sandy. Loving father of Craig and Dana. Dear brother of Anthony (Grace) and John (Christine). Fond brother-in-law of Russell Hvolbek and Judy Bollaci (Anthony). Retired Nassau County Police Officer for over 35 years. A service will be held at the Reformed Church of Locust Valley on June 20th, 2015. Interment private. DodgeThomas.com

Blanche Krul

Krul, Blanche (Broncia) nee Kalinowski of Glen Cove on May 31, 2015. Beloved wife of the late Stanley F. (Stas). Also survived by her loving nieces, nephews, great nieces and nephews. The family will receive friends Friday 3-5 and 7-9 pm at McLaughlin Kramer Megiel Funeral Home 220 Glen Street, Glen Cove. Funeral Mass at the Church of St. Hyacinth Saturday 9:30 am. Interment Holy Rood Cemetery.

Finley Musicians Receive Pointers from a Pro

Members of the Finley Middle School Jazz Band enjoyed a surprise visit from world-renowned composer Carl Strommen during a recent rehearsal.

Strommen is known for composing many genres of music, including vocal, wind band and orchestra. He also composed one of the pieces the jazz band performed at their Spring Concert on May 12.

During the visit, Strommen listened to several musical selections the group was rehearsing, offering tips to help students better perform at the concert. He also worked with students on the arrangement he created, providing them with insight and advice on their performance. Initially, the

students were nervous about performing the composer's piece, but settled in for a great experience.



Photo Caption: Members of Finley Middle School's Jazz Band are pictured with composer Carl Strommen. Photos courtesy of Glen Cove City School District



Great Book Guru

- Ann DiPietro

Dear Great Book Guru,
With over 100 families participating in the Sea Cliff Civic Association's Village-wide Garage Sale this Saturday, June 6, I am sure to find some great treasures, but- of course- the greatest treasure is always a good book. Do you have something to recommend- I feel a mystery is in order.....
Garage Sale Shopper Extraordinaire

Dear Garage Sale Shopper Extraordinaire, My first stop Saturday will be the Village Green where the remarkably energetic Friends of the Library will be holding their book sale and if I am lucky, I might find a copy or two of my new favorite mystery writer's works : Louise Penny. Definitely start with her first STILL LIFE and if you enjoy it, you can work your way through the ten or so books in the series. Set in the fictional village of Three Pines (which reminded me very much of Sea Cliff), the novel opens with

the death of beloved artist and long time resident, Jane Neal, who was about to have her first gallery show. Much of the mystery involves one of her paintings and its connection to family feuds going back generations. Inspector Armand Gamache is a man of great integrity and intelligence who approaches this case with great respect for his team of investigators and the many colorful residents of Three Pines. So much more than the traditional murder mystery, STILL LIFE offers an interesting take on village life, art appreciation, and the psychology involved in police investigations. A very good read!



Nscc Sondheim Tribute - June 13

The North Shore Community Chorus (NSCC), under the direction of Stephen Goldstein, will present a musical tribute to legendary Broadway composer/lyricist Stephen Sondheim.

The Community Chorus will perform music from A Funny Thing Happened on the Way to the Forum, Into the Woods, Sunday in the Park with George, Merrily We Roll Along and Sweeney Todd. Ensemble singers, "Musica Schmoozica," under the direction of Carol Goglia, will perform highlights from West Side Story.

The program will also feature NSCC's distinguished soloists—including Diana Schuld (Glen Head), Jeanne Whelan and Lisa Denison (Glen Cove), Michael Flanagan (Bayville) and Frannie and Mark Kaufmann (Wantagh)—performing Sondheim's best-loved solos/songs.

The NSCC Sondheim celebration begins at 8 p.m. at the North Shore High School Auditorium, 450 Glen Cove Avenue, Glen Head. Bring the whole family! Information: (631) 470-6128



NSCC Director Stephen Goldstein and Musica Schmoozica Director Carol Goglia.

CROSSWORD PUZZLE

Information Stations
by Myles Mellor

1	2	3	4		5	6	7	8	9	10		11	12	13
14					15							16		
17					18							19		
20										21				
				22				23	24	25				
26	27	28					29							
30					31							32	33	34
35					36							37		
38					39							40		
					41							42		
43	44	45								46				
47								48				49	50	51
52						53	54	55						
56						57						58		
59						60						61		

Across

- 1. Freeway exit
- 5. Wheel protector
- 11. Brit. fliers
- 14. Conniver
- 15. City in northern Syria
- 16. Building addition
- 17. Time piece?
- 20. Flipper?
- 21. Nay sayers
- 22. Election winners
- 23. Loch nationality
- 26. Baghdad resident
- 29. Blubber
- 30. Attractive woman
- 31. Organism that needs oxygen to live
- 32. Car-fixers united
- 35. Online comment
- 38. Gone by
- 39. Being
- 40. Pro ____
- 41. Small eggs
- 42. Distended
- 43. Bowed deeply
- 46. Resinous deposit
- 47. Eye opener
- 48. Belt parts
- 52. Regular piece
- 56. Gloomy
- 57. Deceitful one
- 58. Case
- 59. Wreckage in a room
- 60. Out of fashion
- 61. Others

Down

- 9. Lending letters
- 10. Shepherd's pie ingredients
- 11. Prefix with linear
- 12. "___ well"
- 13. Soft tissue
- 18. New Mexico Native American
- 19. Engrossed by
- 23. Attacked with arms
- 24. Appropriates
- 25. "Goody!"
- 26. "Star Trek" character
- 27. Hierarchy level
- 28. Like some winds
- 29. Retro car
- 31. Per ____ (yearly)
- 32. Thailand, once
- 33. No pro
- 34. Melodramatic outburst
- 36. Renovated
- 37. Someone who humbles himself as a sign of respect
- 41. Crew equipment
- 42. Goes with Bell
- 43. ___ of time
- 44. Sealskin wearer, maybe
- 45. Having grass
- 46. Riches
- 48. Brought up
- 49. Guitar forerunner
- 50. Flightless flock
- 51. Fit of pique
- 53. Caesar's hello
- 54. One of the Ewings on "Dallas"
- 55. Old name for Tokyo

The Gold Coast Gazette's Directory of Local Businesses

DINING GUIDE

**YOUR AD COULD
BE HERE! CALL
671-2360**

HOME SERVICES

Charles of Glen Cove
"We're Hardware and More"

(516) 671-3111
19 Glen Street, Glen Cove
Doug Goldstein

HOME SERVICES



James McGowan, President • 323 Glen Cove Avenue • Sea Cliff, NY 11579

Phone: 516.676.0160 Fax: 516.676.5176
Website: johnmcgowanandsons.com
Email: jmcgowanandsons@aol.com

Masonry • Asphalt Paving Repairs
Power Sweeping & Cleaning
Drain Cleaning & Installations
Concrete Foundations & Flat Work
Excavation Site Work • Seal Coating & Striping
Concrete Paver Installations
Interlocking Retaining Walls
Concrete Curb & Belgium Block Curbs



*To advertise
call
671-2360*

Ray's Towing
516-676-7791

*Serving the North Shore and beyond
Specialists in Recovery and
Heavy Equipment Moving*

Old Country Tree Service

COMPLETE TREE SERVICE
TOPPING • PRUNING • CLEARING • REMOVAL
CORDWOOD • WOOD CHIPS • FULLY INSURED

(cell) 516-330-1982 **516-277-2208**

LAFFEY ASSOCIATES
FINE HOMES & ESTATES
LAFFEY.COM

35 Northern Boulevard
Great Neck, NY 11545
Office: (516) 625-2944 Ext. 226
Fax: (516) 625-5415
F28-1556 03/2014



Mary Stanco, CBR
Licensed Salesperson

JOHNSON CONSTRUCTION CORP.

*General Contractors and Builders
Additions, Alterations, Kitchens,
Bathrooms, Residential and Commercial*
Jake Johnson
671-9155
32 Marden Ave. Sea Cliff

LONG ISLAND
516-676-0083
WESTCHESTER
914-233-7765
THE
"ULTIMATE SERVICE"
FOR THE BUSY DOG OWNER
SCOOPY DOO
Dog, Goose & Bird Waste Removal
www.scoopydoo.com

EvergreenClean

CARPET, RUGS, UPHOLSTERY, DRAPERY,
TILE & GROUT CLEANING & PROTECTION
"The Most Thorough Cleaning Guaranteed Or It's FREE"

44 Sea Cliff Avenue
Glen Cove, N.Y. 11542

Tel: (516) 674-0300
www.evergreenclean.org

PROFESSIONAL



Do you have jewelry, watches or diamonds that you no longer wear? If you are interested in selling your old jewelry, Maddaloni Jewelers offers confidentiality and security, guaranteed. We are one of the most reputable companies in the trade. Your peace of mind is our priority.

Maddaloni
Jewelers

1870 East Jericho Turnpike Huntington New York 11743
888.999.4038

HOME SERVICES

JOHNSON CONSTRUCTION CORP.

*General Contractors and Builders
Additions, Alterations, Kitchens,
Bathrooms, Residential and Commercial*
Jake Johnson
671-9155
32 Marden Ave. Sea Cliff

HOME SERVICES



**GOLD COAST
WINDOW
FASHIONS**

EST. 1999

- Blinds
- Shades
- Shutters
- Fabrics
- Window Film

HunterDouglas
Austria
COLLECTION

60 Roslyn Avenue Sea Cliff, NY 11579 (516) 609-0828
Visit our website for specials: www.goldcoastwf.com

Liberty Mutual.
INSURANCE
AUTO | HOME | LIFE

Liberty Mutual Insurance
114 Old Country Rd., Suite 152
Mineola, NY 11501
(866) 749-3307 Ext. 52845
Direct Fax: (866) 321-4491

John Alcina
Executive Sales Representative
John.Alcina@LibertyMutual.com



FOR YOUTH DEVELOPMENT®
FOR HEALTHY LIVING
FOR SOCIAL RESPONSIBILITY

The YMCA at Glen Cove
125 Dosoris Lane, Glen Cove, NY 11542
516-671-8270 www.ymcali.org

Morgan Park Summer Music Festival Launches Annual Appeal

Morgan Park Summer Music Festival (MPSMF) launched its 2015 fundraising campaign with a working luncheon at Stangos Restaurant in Glen Cove. Over 30 volunteers gathered to send hundreds of letters to friends and neighbors requesting donations that would enable the group to continue its mission of bringing free family concerts to the park each summer weekend. The work of MPSMF is carried out entirely by volunteers. The concerts presented are supported by private and business donations; no taxpayer money is requested or received.

This year's season of nine concerts will provide a rich variety of professional entertainment designed to appeal to all musical tastes. "I am very excited about the musical entertainment we have lined up for this summer. We have everything from classical to folk, from Americana to tribute bands. Our 56th summer season promises to have music that the entire family can enjoy." Said MPSMF Board Chairman Tom Suozzi.

The season begins on Sunday, July 5 with the return of the Glen Cove's own North Shore Pops Concert Band performing Americana 2015. This 55-piece ensemble will celebrate the birth of our nation with a rousing program of American favorites. On July 12 the winners of this year's Marguerite Suozzi Young Performers Competition will delight audiences with their exceptional

talents. Many of the past winners of this competition have gone on to have very rewarding and successful musical careers.

This summer will also feature tribute bands performing the songs of Johnny Cash on July 26, Jimmy Buffet on August 9 and The British Invasion on August 16. On July 19, the City of Belfast Youth Orchestra, which includes renowned flutist Sir James Galway among its founders, will make Morgan Park Summer Music Festival a stop on its 60th anniversary tour. Plaza Productions returns to the stage on August 2 performing West Side Story. Always a crowd pleaser, the United States Navy Band Northeast returns to the Morgan Park stage on August 23 for a delightful evening of patriotic music and Americana. The season will close on August 30 with a folk festival featuring A Band Called Honalee, playing tribute to many of the great folk-rock legends of the 60s.

Morgan Park Summer Music Festival encourages young artists and provides cultural enrichment to the entire Long Island community. The concerts are free and all are welcome to attend. It is only through the generosity of the public that the Festival is able to provide such a diverse and talented level of entertainment year after year. All donations are gratefully accepted. Please make checks payable to Morgan

Park Summer Music Festival. They may be mailed to MPSMF, Post Office Box 296, Glen Cove, NY 11542. For more information, please call 516-671-0017, email morganparkmusic@yahoo.com, visit www.morganparkmusic.org

or find us on Facebook at Morgan Park Summer Music Festival. Morgan Park Summer Music Festival is a 501(c)(3) organization; donations are tax deductible to the extent permitted by law.



Morgan Park Summer Music Festival recently launched its 2015 fundraising campaign with a working luncheon at Stango's Restaurant in Glen Cove. More than 30 volunteers were on hand to stuff, seal and stamp the hundreds of letters that went out as part of the annual appeal. This year's concerts begin on July 5 with Glen Cove's own North Shore Pops Concert Band performing Americana 2015. The 56th season of free concerts in the park promises to deliver weekly entertainment for the entire family. Photos courtesy of Tab Hauser.

CONTACTS FOR ADDITIONAL INFORMATION

Continued from page 8

If you have any questions about this report or concerning your water utility, please contact the Water Department at (516) 676-2297 or the Nassau County Department of Health at (516) 227-9692. We want our valued customers to be informed about our water system. If you want to learn more, you can attend any of our regularly scheduled City Council meetings. They are normally held on the second and fourth Tuesday of each month at 7:30 p.m. at City Hall, unless otherwise posted.

The City of Glen Cove routinely monitors for different parameters and contaminants in your drinking water as required by Federal and State laws. All drinking water, including bottled drinking water, may be reasonably expected to contain at least small amounts of some contaminants. It's important to remember that the presence of these contaminants does not necessarily pose a health risk. For more information on contamination and potential health risks, please contact the USEPA Safe Drinking Water Hotline at 1-800-426-4791.

During 2014, the District collected 30 samples for lead and copper. The next round of samples will occur in 2017. If present, elevated levels of lead can cause serious health problems, especially for pregnant women, infants, and young children. It is possible that lead levels at your home may be higher than at other homes in the community as a result of materials used in your home's plumbing. The City of Glen Cove is responsible for providing high quality drinking water, but cannot control the variety of materials used in plumbing components. When your water has been sitting for several hours, you can minimize the potential for lead exposure by flushing your tap for 30 seconds to 2 minutes before using water for drinking or cooking. If you are concerned about lead in your water, you may wish to have your water tested. Information on lead in drinking water, testing methods, and steps you can take to minimize exposure is available from the Safe Drinking Water Hotline (1-800-426-4791) or at <http://www.epa.gov/safewater/lead>.

Some people may be more vulnerable to disease causing microorganisms or pathogens in drinking water than the general population. Immuno-compromised persons such as persons with cancer undergoing chemotherapy, persons who have undergone organ transplants, people with HIV/AIDS or other immune system disorders, some elderly and infants can be particularly at risk from infections. These people should seek advice from their health care provider about their drinking water. EPA/CDC guidelines on appropriate means to lessen the risk of infection by Cryptosporidium, Giardia and other microbial pathogens are available from the Safe Drinking Water Hotline (800-426-4791).

WATER SYSTEM IMPROVEMENTS

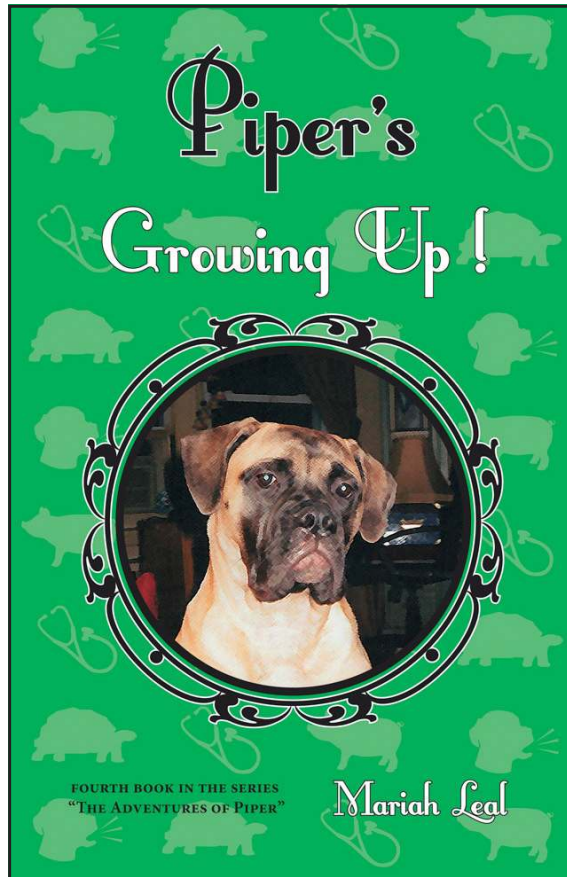
The City of Glen Cove is committed to providing Glen Cove residents with the highest quality and best tasting water and to improve the overall efficiency of the system. With this in mind, the Department of Public Works had undertaken an internal audit of all water department facilities, mechanical systems and delivery infrastructure. Immediate needs for operational and mechanical improvements have been determined and the City will be performing major improvement projects for the 2015 period. Improvement projects will include upgrading the City's transmission main to provide service to the waterfront redevelopment project area.

The Adventures of Piper Series Comes to a Happy End

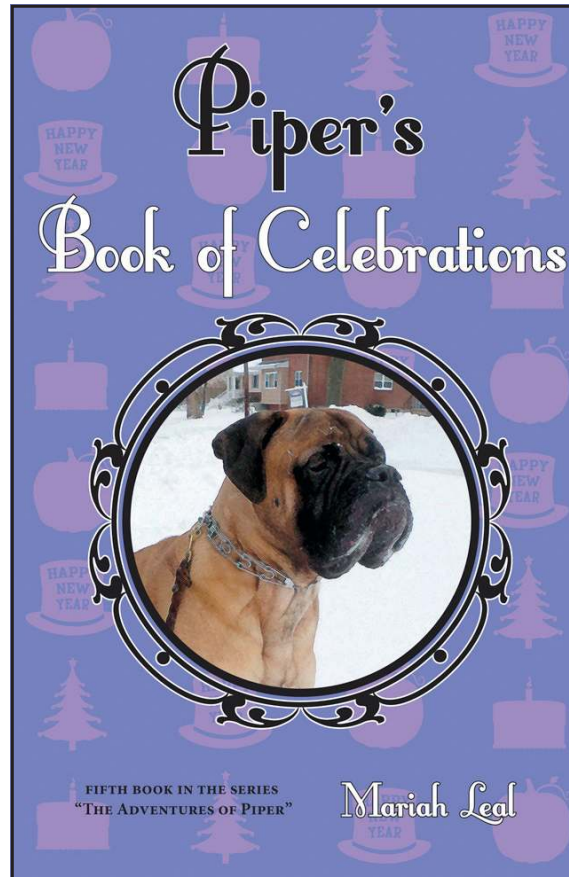
Local Author, Mariah Leal of the children's book series "The Adventures of Piper" is proud to announce the release of the last two books in this series. Book 4 "Piper's Growing Up" is in hand and Book 5 "Piper's Book of Celebrations" will be arriving the beginning of June.

Leal who has written this series to educate children about the importance of training and socializing dogs has a mission. She hopes that the number of dog bites involving children and the number of dogs relinquished to shelters simply because they haven't had training or socialization will be lowered due to educating children and their families. Piper and Mariah just attended the Long Island Kennel Club Dog Show at Planting Fields this past Sunday, May 17th, 2015. Leal has had good responses to her Books and has a number of events planned for June. She and Piper will be attending the Greenwich Kennel Club All Breed Dog Show in Connecticut where Leal is a featured Author. She will also be doing two

presentations in Central New York at the Guernsey Memorial Library in Norwich,



Mariah says "It's been a long road getting this series of books published. The



and PR has been rough! However, I must extend my heartfelt thanks to all those that believed in my cause and me enough to contribute monetarily. All of you who donated or gave loans have a part in helping to educate our children so they will be safe and so will man's best friend. I am so grateful that when one door closes, God does open another! Being told I am disabled and unable to work was the lowest point in my life. Well God saw fit to open that other door. Piper was waiting on the other side and the rest is history! There will be more Piper books to come following her adventures as an adult".

You can reach Mariah Leal at either her website: mariahleal.com or email: mariahlealauthor@aol.com to see what she and Piper are up to.

and the Dunham Public Library in Whitesboro, New York.

writing was easy but, getting the funds together, doing all my own marketing

LATITUDE 40.85

Picture Perfect Receptions

- Award Winning Cuisine
- Spectacular water views
- Pampering personalized service
- Attention to detail




LATITUDE 40.85
By NPL Foods
Exclusive Caterer
at the
SEA CLIFF YACHT CLUB



Call for an appointment to speak with a Catering Consultant 516 671-7374